

OUR 2010 SPOTLIGHT SALE DOE-

TEMPO KIM

PUREBRED LAMANCHA DOE, BORN 2/25/10



Kim is a blending of our young star, SGCH Tempo Evianna 9*M, and our beautiful SGCH Tempo Hannah 5*M. We think she brings out something for everyone, whether for show or commercial. You'll find her pedigree filled with generations of champion, high scoring does with strong milk records and good components. From Hannah's lovely topline and graceful movement to Evianna's high wide rear udder and ideal teats, Kim combines the best we have in a correct, dairy package that we are proud to offer in the 2010 ADGA Spotlight Sale.

KIM'S PEDIGREE, FILLED WITH CHAMPIONS AND LEGENDS OF THE LAMANCHA BREED!!!

sss-GCH+*B BECCA'S HEMINGWAY

sire of **2005 National Champion**
SGCH Kastdemur's Slice 3*M
5-05 FS93 EEEE
4-11 3080 105 3.4% 92 3.0%

ss-SGCH +B BECCA'S TUSCON

FS92 EEEE, 5 daughters scored EX90-91

ssd-SGCH ONE OAK HILL MEDICINE TUZLA

2002 National Champion
Full sister to-
GCH++*B One Oak Hill Medicine Turnult

Sire -SG *B TEMPO LIGGETY

sds-SGCH++*B QUIXOTE KATE'S KAREEM

multiple GCH and Top Ten daughters
including-
SGCH Tempo Torvill 7*M 3-4 FS91 EEEE
3-00 286 3407 114 3.3% 98 2.9% '04 TOP TEN
SGCH Tempo Vonetta 3*M 3-4 FS90 EVVE
3-00 303 3682 114 3.1% 103 2.8% '05 Top Ten
3-11 305 3667 114 3.1% 100 2.7% '06 Top Ten

sd-SG TEMPO MIA 4*M

2-2 FS90 VEEE
1-01 281 2116 82 3.9% 67 3.2%

sdd-SGCH TEMPO NADIA 3*M

5-2 FS91 EEEE 4xGCH, 10xBOB
4-10 305 2636 110 4.2% 75 2.8%
Lifetime 1470 11582 485 4.2% 333 2.9%

dss-+B KASTDEMURS STING

son of **2005 National Champion-**
SGCH Kastdemurs Slice *M
5-05 FS93 EEEE
4-11 3080 105 3.4% 92 3.0%

ds- SG+*B KASTDEMURS TACH LACH

Elite Sire
5 GCH daughters, 6 daughters scored Ex
2009 ADGA National Show Premier Sire
2009 Nat'l 1st place Sr Get

dsd-SGCH KASTDEMURS EVIAN 3*M

2009 NATIONAL CHAMPION & BEST UDDER
2008 NATIONAL CHAMPION & RES BEST UDDER
2006 Reserve National Champion
3-5 FS92 EEEE, 4-3 FS94 EEEE, 5-3 FS94 EEEE
2-00 305 3180 93 2.9% 85 2.7%
2-11 305 3860 120 3.1% 102 2.6% '07 Top Ten

Dam -SGCH TEMPO EVIANNA 9*M

LA 1-7 FS89 VEEE, 2-7 **FS91 EEEE**
1-01 305 2420 96 4.0% 80 3.3%
2-00 177 1914 69 3.6% 59 3.1% proj 3117 112 97
2009 District VII LaMancha Specialty GCH
2009 ADGA National Show RSGCH
2010 District 7 LaMancha Specialty
RSGCH, Res Best Udder

dds-SG++*B TEMPO JESSE O

7-2 FS91 EEEE, 8-2 FS92 EEE
Twin to SGCH Tempo Nadia 3*M

dd- SGCH TEMPO KRISTI 8*M

LA 3-5 FS88 VVVV
2-10 305 3235 118 3.6% 112 3.5%
2xGCH, 3xRSGCH, 2xBUOB, 1xBUIS
Twin to-SGCH Tempo Skoblikova 8*M 4-3 FS91 VEEE

ddd-SGCH TEMPO TORVILL 7*M

3-4 FS91 EEEE
3-00 286 3407 114 3.3% 98 2.9% **'04 TOP TEN**
1 GCH daughter

KIM'S DAM-



SGCH TEMPO EVIANNA 9*M

'09 10x1st, 2xGCH, 3xRSGCH

GCH- 2009 District VII LaMancha Specialty

RSGCH- 2009 ADGA National Show

'10 1xBOB & BUOB,

RSGCH, Res Best Udder -2010 District VII LaMancha Specialty

LA 1-7 FS89 VEEE, **2-7 FS91 EEEE**

1-01 305 2420 96 4.0% 80 3.3%

2-00 177 1914 69 3.6% 59 3.1% inc., proj 3117 112 97

Evianna is our idea of a near perfect young doe. She stands on straight, strong feet and legs with plenty of bone and angulation. She is level and wide across the back and rump, and effortlessly kidded with triplets, one a great big buck. Her udder is beautiful, with balance and symmetry from both side and rear, and milks down to a soft texture from ideal teats. Her production is good, especially for a young doe, with a long level lactation instead of dramatic high days. She has good milk quality with more than adequate components. Last and most important, she comes from a long line of consistently strong does on both sides of her pedigree, and is not just a flashy young doe with no history and a questionable future. She's solid, strong and consistent, just the right type of doe to be the dam of your next purchase!

EVIANNA'S SIRE-

SG+*B KASTDEMURS TACH LACH ("Takh") **ELITE BUCK**



SGCH KASTDEMURS EVIAN 3*M, dam of Takh

**2009 NATIONAL CHAMPION & BEST UDDER
2009 NATIONAL TOTAL PERFORMER AWARD WINNER
2008 NATIONAL CHAMPION & RES BEST UDDER
2006 RESERVE NATIONAL CHAMPION**

**3-5 FS92 EEEE, 4-3 FS94 EEEE, 5-3 FS94 EEEE
2-00 305 3180 93 2.9% 85 2.7%
2-11 305 3860 120 3.1% 102 2.6% '07 Top Ten**

Takh is the first son of one of the most remarkable does in the breed today. Not only is she successful in the showring, a Top Ten doe, and the highest scoring LaMancha in the US, she is also a prepotent brood doe as well. Evian's pedigree combines a solid maternal family, with a well known sire of champions. The result is an incredible doe that has the consistency to reproduce herself. Her daughters include GCH Kastdemurs Aquafina 4*M, 3-3 FS92 EEEE, and CH (pend) Kastdemurs Avena, a knockout youngster with a FS89 and a BIS under her belt already as a milking yearling! Takh's sire is the son of the 2005 National Champion, SGCH Kastdemurs Slice 3*M, FS93 EEEE, 4-11 3080 105 3.4% 92 3.0%. Slice is maternally related to Evian, making Takh linebred on the most successful LaMancha maternal line. With at least 6 EX daughters, and five GCH/CH daughters already, Takh is following the same powerful consistency as his illustrious family. In 2009, his daughters started by winning the District VII LaMancha Specialty GCH, Sr Get and Best Three Females, then went on to the 2009 ADGA National Show, where Takh was named Premier Sire, using daughters from five different herds. His daughters won 1st Sr Get at Nationals and a week later three different daughters won 1st Sr Get at the Sonoma County Fair. A recent check with the USDA data shows 12 daughters in 7 herds with a average final score of 88.6, and average production of 2600 lbs.

Takh daughters (besides Evianna!)-

Not pictured- CH Tempo Kelly FS91 VEEE and
2006 Colorama sale doe owned by J Koploy



SGCH Barnowl Hockus Pockus (owned by Barnowl)
2008 ADGA NATIONAL 1st/1st udder 2 yr old
3-04 FS91 VEVE



SGCH Tempo Killy 5*M (owned by Redland
2-5 FS90 EEEE Community College)
2-11 311 2925 107 3.7% 94 3.3%



CH Barnowl Acythera (owned by Barnowl)
3-02 FS91 EEEE

Barnowl Abracadabra *M FS90 VEVE
2007 Spotlight Sale Doe owned by Purple Thistle



SG Tempo Jerin 3*M (owned by S. Bensen)
3-04 FS91 EEVE



Tempo Dawn 3*M (deceased)
LA 1-7 FS87 +EVE
'10 1xGCH, 7xRSGCH, 10x1st in 12 shows



Rockin-CB KTL Yarrow (owned by Rockin-CB)
1st freshener, 2 GCH legs, 1xBOB

EVIANNA'S DAM-



SGCH TEMPO KRISTI 8*M

LA 3-5 FS88 VVVV

2-10 305 3235 118 3.6% 112 3.5%

'08 1xGCH, 2xRSGCH, 2xBUOB,
1xBUIS, 4x1st, 4x2nd

Kristi is a dairy and angular doe with an excellent rear leg set, sharp and clean front end assembly and gorgeous head. Her udder is well balanced with a strong medial and excellent teat placement. Owned by Lucky Star Farm, she has milk tests this year of over 18 lbs. Kristi is the twin sister to SGCH Tempo Skoblikova 8*M. Skobli, owned by Alder*Rose Dairy Goats, has been a strong Northwest Champion, with many BOB and BIS to her credit, including twice District VII LaMancha Specialty BOB & BUOB.

NEWS FLASH- After moving to TX, Kristi just finished her GCH with a GCH/BOB/BUOB win at the OK State Fair! This win completes 8 generations of permanent Champions behind Kim. Congratulations Christina!!!



Kristi's twin sister-

SGCH TEMPO SKOBLIKOVA 8*M

owned by Alder*Rose Dairy Goats

4-3 FS91 VEEE, 5-5 FS92 EEEE

3-01 261 2910 119 4.1% 98 3.4%

4-00 244 3510 111 3.1% 109 3.2%

14xBOB, 4xBIS

**District 7 LaMancha Specialty 2008 & 2009-
BOB, BUOB, BIS, BUIS**

KRISTI'S DAM-



GCH TEMPO TORVILL 7*M

3-4 FS91 EEEE

1-00 305 3085 101 3.3% 89 2.9%

ext 620 6203 206 3.3% 188 3.0%

3-00 286 3407 114 3.3% 98 2.9%

5xGCH, 3xBOB, 3xBIS

Powerful, long, tall and level, Torvill was a breakthrough doe for us. She had it all, size, beautiful general appearance, style, an excellent udder and Top Ten Production. Her career was cut short by mastitis, but she was unique as our first truly tall and long LaMancha.

TORVILL'S DAM-



GCH TEMPO KATYA 6*M

LA 4-3 FS91 EVEE 5-4 FS90 EEEE

4-00 305 2745 100 3.6% 77 2.8%

Lifetime 1656 14329 515 3.6% 418 2.9%

19xBOB, 3xBIS, 4xGCH, 3xRSGCH

'99 GCH, BOB, BIS District VII LaMancha Specialty

ADGA National Show 3rd place 3 yr old

& Total Performer Award

'02 3rd/3rd udder 5-6 yr old ADGA National Show

Katya was one of our original three foundation does. Her dam, GCH Aspen Hill's Karoline 5*M, was a joint purchase in the '92 Colorama Sale with Cindy and Bob Silva. Karoline was a daughter of Reserve National Champion, GCH Aspen Hill's Whiz Kid 4*M, making Katya a 5th generation GCH. Katya was appraised Excellent five times, and scored E in general appearance 3 times, with E in head, shoulder assembly, front & rear legs, back; V rump and feet. Katya had a tremendous area of udder attachment, with a beautiful extension of fore. Katya was a wonderful brood doe for us. Her daughters, GCH Surya, GCH Torvill and GCH Elena scored FS92 EEEE, FS91 EEEE and FS90 VEEE. Her sons include ++*B Tempo Scotty and SGCH +*B Tempo Yagudin, both sires of multiple champions.

KIM'S SIRE- SG *B TEMPO LIGGETY



LIGGETY'S TWIN SISTER-

SGCH TEMPO HANNAH 5*M

LA 2-4 FS89 EVEV (first freshener), 3-4 **FS90 EEEV**

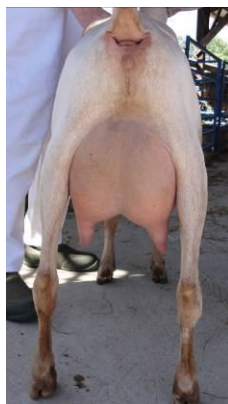
1-10 272 1847 82 4.4% 57 3.1%

2-10 297 2538 108 4.3% 80 3.2%

4xGCH, 2xBOB, 1xBIS

2009 ADGA National Show 4th place 3 yr old

Hannah is a correct and stylish young doe. She resembles her granddam Tuzla with her levelness and angularity. Full or empty, at home or the showring, Hannah is one of the most beautiful does I have owned. She simply floats as she walks, and is so correct that she is always beautifully set up. Although her udder isn't as capacious as some of our other does, it is very tightly attached, with extremely correct teats and medial. After having triplets this year, Hannah had the needed capacity and looked stunning, until mastitis ruined half of her udder in May. While this is so disappointing from a show aspect, we will also terribly miss her in the milking parlor, as she was usually chosen for our house milk, due to her high components, wonderful flavor and ease of milking. Liggety daughters have shown the same beautiful general appearance, so much so that they sold very quickly. We finally kept some for ourselves this year! Owners of the other daughters are reporting very nice mammary systems, with especially nice teat placement.



Liggety daughter- Tempo Qutee Q

Milking yearling owned by
Bill and Martha Griner

Shown three times-

1xRSGCH, 2x1st, 1x2nd

LIGGETY'S DAM-



SG TEMPO MIA 4*M

LA 1-2 FS86 +VVV

2-2 **FS90 VEEE**

1-01 281 2116 82 3.9% 67 3.2%

2-01 148 1820 58 3.6% 66 3.1% (mastitis)

'05 District 7 LaMancha Specialty 2nd milking yearling

'05 ADGA Nationals 5th place milking yearling

'05 Sonoma County Fair 3rd place milking yearling

Mia was a sharp correct young doe with exceptional feet and legs, a level rump and clean front end. She had a beautiful mammary and was milking very well until mastitis stopped her as a two year old. We feel she was one of our best, but never had the opportunity to prove herself except through Liggety and Hannah

MIA'S DAM-



GCH TEMPO NADIA 3*M

LA 5-2 **FS91 EEEE**

4-10 305 2636 110 4.2% 75 2.8%

5-11 286 2473 101 4.1% 70 2.8%

Lifetime 1470 11582 485 4.2% 333 2.9%

4xGCH, 10xBOB, 2xBIS

'02 2nd **place 2 yr old ADGA National Show**

'03 3rd **place 3 yr old ADGA National Show**

'04 RSGCH California State Fair

'05 2nd **place 5-6 yr old ADGA National Show**

'05 **Dist. VII LaMancha Specialty BOB & BIS,
Sonoma Co Fair 2nd 5-6 yr old, 2nd udder**

'06 GCH & BUOB- Sonoma Co Fair, 7th place 5-6 yr old
ADGA Nationals, 1st Dam & daughter

Nadia was one of the most correct does we have ever owned, in any breed. Her near ideal feet and legs, front end assembly and topline were just as strong as could be until we lost her this summer at 10 years old after having one last very special doe kid. In addition to being Liggety's granddam, Kim is linebred to Nadia through her dam, as Kristi's sire, SG ++*B Tempo Jesse O, was Nadia's twin brother.

NADIA'S DAM-



GCH WINDSTAR NOTTA SHY ANNE

LA 9-4 FS91 EEEE 3xEX after age 5
5-01 305 3676 145 3.9% 99 2.7% '99 TopTen
6-00 305 3436 110 3.2% 84 2.4% '00 TopTen
6xBOB 2xRSGCH 2xBIS (after age 5)
'99 Western Washington State Fair BOB
'00 California State Fair GCH, BUOB,
Miss Total Performer
and highest lactation awards
'00 Oregon State Fair GCH,
Western WA State Fair RSGCH
2 GCH daughters, 1 Top Ten daughter

Notta was also one of our three original LaMancha does. Purchased as a 5 year old, she had already made her mark as a top show doe in the Northwest. We put her on official milk test, where she quickly made two Top Ten records, had her appraised 3x Excellent, and took her further afield where she continued to win in major shows. She was the dam of champions Nadia and Vonetta, and had sons setting new standards for production and type in both commercial and purebred herds. Notta figures prominently in Kim's pedigree through both her daughter Nadia and her son Jesse O.

NADIA'S and MIA'S SISTER-



SGCH TEMPO VONETTA 3*M

3-4 FS90 EVVE
3-00 303 3682 114 3.1% 103 2.8% '05 Top Ten
3-11 305 3667 114 3.1% 100 2.7%
Lifetime 1120 12112 385 3.2% 336 2.8%
3xGCH,
'06 Sonoma County Fair
1st /1st udder 4 yr old and RSGCH

Vonetta was closely related to Liggety as Nadia's maternal sister, and Mia's paternal sister. She was a wide and powerful doe, correct on her feet and legs, level over the top, with a strong, capacious udder and lots of milk.