

## **LEST WE FORGET-**

We started in dairy goats in 1962. We would like to pay tribute to those animals which have left their mark on our herd, and in our hearts. Our motto is 'moving forward', but without the impact of these individuals, the foundation and strength of our herd would be entirely different. This file can be used both as a performance and pedigree reference, and a compilation of our life's work. I foresee that it will undergo many changes as new animals are added, and as I am able to get more research done on some of our much older animals. Currently, it is just a listing of the animals that have been retired or have passed on. Later, I will build into it the stories behind them. Currently, the animals are listed in breed order, Saanens, then Alpines, then LaManchas.



## **SAANEN DOES-**

### **SGCH DES RUHIGESTELLE ELENTARA 7\*M (deceased)**

born 6/99 American ID 904 TPS 109



LA 2-01 FS89 VE+V  
3-01 FS89 VEVE  
**4-01 FS90 VEEV**  
**5-11 FS91 EEEE**  
**6-11 FS90 VEEE**  
**7-11 FS91 EEEE**  
**10-2 FS91 EEEV**

**1-07 305 3691 135 3.7% 114 3.1% '01 Top Ten**

ext 309 3727 136 115

2-08 267 2700 107 4.0% 83 3.1%

3-06 395 3496 130 3.7% 108 3.1%

4-07 313 3302 113 3.4% 96 2.9%

**5-07 305 3719 156 4.2% 111 3.0% '05 Top Ten**

Lifetime to date

**1926 20196 742 3.7% 612 3.0%**

"Naughti" is a farm favorite that has done it all. She has twice been a Top Ten doe, twice first at Nationals, five times scored Ex, and has milked over 20,000 lbs. She is the matriarch of our most consistent doe line, and the dam of three of our favorite does, Elendili, Elendara and Elendaki, granddam of numerous more. Including Naughti, there have been four generations (Naughti, Elendili, Elende, Elenwe) to stand in the championship lineup at Nationals! She loves attention, and is always a crowd pleaser with her long level topline and beautiful style. Our appraiser in '09 assumed she was another of our many five year olds, until I reminded him that she was ten! Despite her age, she is still as beautiful and correct (and naughty!) as ever. Now a spunky 16, Elentara is retired.

6xGCH, 7xBOB, 5xBIS

'00 Oregon State Fair Jr Champion & BJDIS

'01 GCH District 7 Saanen Specialty, 1<sup>st</sup>/1<sup>st</sup> udder 2yr old California State Fair

'03 BOB District 7 Saanen Specialty, BIS in 2<sup>nd</sup> ring

**'04 ADGA Nationals 1<sup>st</sup> place 4 yr old**

'04 BOB Western WA State Fair, 2<sup>nd</sup> 5 yr old Sonoma Co & California State Fairs

**'05 1<sup>st</sup> /1<sup>st</sup> udder 5-6 year old ADGA Nationals, GCH - Sonoma County Fair**

'06 3xBOB, 2xBIS, 4<sup>th</sup> Aged doe ADGA Nat'l, 2<sup>nd</sup> Sonoma Co Fair

ss- SG++\*B Sartyr Cascade Pharoah

s-SG++\*B Briarwinds Pharoah Talut

**'03 & '05 ADGA National Show Premier Sire**

Sire of 6 National Show class winners

Top Ten daughters Elentara, Ellessea, Eir and Kaza

LA appraisal 7 daughters FS 90-92, all with E mammary!

At least 7 GCH daughters

sd- GCH Briarwind Shiloh Tasmin 5\*M

**3-11 305 4310 180 4.2% 142 3.3%**

**'97 Top Ten #1 Protein, FS 88 +EEE**

ds-SG+\*B des Ruhigestelle Darin

d-SG des Ruhigestelle Elf 6\*M

3 FS90-91 daughters, two Top Ten daughters

4 daughters over 3100 lbs milk

dam of dR Elowah 7\*M

**3-00 305 5450 216 4.0% 159 2.9%**

**'01 Top Ten, #1 milk, #1 protein, #2 fat**

dd-des Ruhigestelle Eden 5\*M

**2-10 305 5259 165 3.1% 146 2.8%**

**'92 All Breed Leader**

Twin to SGCH ++\*B dR Equus

## SGCH DES RUHIGESTELLE LLYONESSE 5\*M (deceased)

born 11/01 American ID 190 TPS 109



LA 1-9 FS89 EEEE	6-9 FS90 VEEE
2-9 FS90 VEEE	7-9 FS90 VEEE
3-7 FS91 VEEE	8-9 FS92 EEEE
4-7 FS92 EEEE	9-7 FS92 EEEE
5-7 FS91 EEEE	10-9 FS90 EEEE

1-04 296 2822 101 3.6% 90 3.2%  
 2-04 286 3183 107 3.4% 101 3.2%  
 3-04 302 3501 121 3.5% 116 3.3%  
 4-03 302 3751 124 3.3% 119 3.2%  
 5-03 305 3107 106 3.4% 101 3.3%  
 6-03 287 3445 108 3.1% 105 3.0%  
 7-03 300 3095 103 3.4% 97 3.2%  
 8-03 305 3024 93 3.1% 92 3.0%  
 9-04 277 2605 87 3.3% 78 3.0%  
 10-04 139 1505 39 2.6% 45 3.0% proj 2850  
 Lifetime  
**2843 31,524 1041 3.3% 990 3.2%**

There may be other **30,000** lb Saanens, and there may be other does who have scored **Excellent 9 times**, but I doubt there are very many which have done both! Nesse set a new standard for consistency both in and out of the milk parlor. Long, sharp and level, with a style very much like Elentara's, Nesse was a very capacious doe with a large area of attachment and very correct teat placement, and an udder whose shape and medial remained virtually unchanged after over 30,000 lbs of milk. Structurally, she was correct and clean, with little evidence of wear, scoring V and E in nearly every category while in the midst of her 10<sup>th</sup> lactation. Nesse's son Lladro is now an Elite sire. After giving us one last doe kid last year, we lost Nesse to mammary cancer.

'03 7x1st yearling milker, 1xGCH & BUOB, ADGA National 5<sup>th</sup> place milking yearling  
 '04 3xGCH, 2xBOB, 1xRSGCH 2<sup>nd</sup> 3yr old CA State Fair, 1<sup>st</sup> 2 yr old Western WA State Fair  
 '05 3xBOB, 1xBIS, 1xBUIS, 4<sup>th</sup> place 3 yr old-Nat'ls, 1<sup>st</sup> place 4 yr old-Sonoma Co. Fair  
 '06 5<sup>th</sup> place 4 yr old Nat'ls, 2<sup>nd</sup> BOB (to Nashville) Western WA Fair, member Best Dairy Herd in Show  
 '07 GCH, BUOB, BUIS-W WA State Fair, 2x2<sup>nd</sup> (to Ellessea) Sonoma Co Fair & CA State Fair Specialty  
 '08 2xBOB & BUOB, 2x2<sup>nd</sup> (to Duchess and Ellessea)  
     **2<sup>nd</sup> place/3<sup>rd</sup> udder 5-6 yr old ADGA National Show, 2<sup>nd</sup> place Dam & Daughter (w/ Lluinil)**  
     **Member 1<sup>st</sup> Breeder's Trio and 1<sup>st</sup> Dairy Herd**  
 '09 1xBOB  
     **1<sup>st</sup> place/1<sup>st</sup> udder 7+ years ADGA National Show**  
 '10 2xBOB & BUOB

ss- SG++\*B Sartyr Cascade Pharaoh  
s-SG++\*B Briarwinds Pharaoh Talut  
 '03 & '05 ADGA National Show Premier Sire  
 Sire of 6 National Show class winners  
 Top Ten daughters Elentara, Ellessea and Kaza  
 LA appraisal 7 daughters FS 90-92, all with E mammary!  
 7 GCH daughters  
sd- GCH Briarwind Shiloh Tasmin 5\*M  
 3-11 305 4310 180 4.2% 142 3.3%  
 '97 Top Ten #1 Protein, FS 88 +EEE

s--\*B Thunder Run Irish Ice Dancer  
d-SGCH des Ruhigestelle Leota 4\*M  
 3-4 FS 87 VEVV  
 2-01 305 3269 105 3.2% 93 2.8%  
 3-00 305 3562 113 3.2% 98 2.8%  
 '99 Oregon State Fair GCH  
dd- des Ruhigestelle Leahag 3\*M



## SGCH DES RUHIGESTELLE WINSEEKER 3\*M (deceased)

born 2/04 American ID 419 TPS 106



Seeker, age 4

LA 2-3 FS89 VEEE **5-5 FS91 EEEE**  
 3-3 FS89 EEEV **6-5 FS92 EEEE**  
**4-5 FS93 EEEE 7-4 FS92 EEEE**

### **8-5 FS93 EEEE**

2-00 294 2324 93 4.0% 73 3.1%  
 3-00 304 2800 118 4.2% 89 3.2%  
 4-00 305 3490 141 4.0% 106 3.0%  
**5-00 296 3501 140 4.0% 107 3.1%\*\* '09 Top Ten**  
 5-11 288 3275 120 3.7% 100 3.1%  
 6-11 305 3352 122 3.6% 99 2.8%  
 8-02 177 2052 66 3.2% 56 2.8%  
 Lifetime - **1918 20838 802 3.9% 632 3.1%**



Seeker, age 8

7xGCH, 2xRSGCH, 5xBOB, 3xBUOB, 1xBIS

**'05 ADGA National Junior Champion**

**'08 ADGA NATIONAL CHAMPION &**

**BEST UDDER SAANEN**

**Member 1<sup>st</sup> Breeder's Trio and 1<sup>st</sup> Dairy Herd**

**'10 District 7 Saanen Specialty BOB & BUOB**

**'12 ADGA National Show 1<sup>st</sup> Aged doe**

**Reserve Best Saanen Udder**

**1<sup>st</sup> Dam and Daughter (w/ WinCatcher)**

**'12 Oregon State Fair GCH & BOB**

**Member Supreme Breeder's Trio**

**'12 Washington State Fair GCH/BOB/BUOB**

**'13 ADGA National Show 1<sup>st</sup> Produce of Dam**

When you're Seeker, you get two pages, because it simply won't fit on one. She's done it all, as a National Junior Champion that went on to be a National Senior Champion, a Top Ten doe with over 20,000 lbs of milk, and an LA of FS93. And she has one National Champion, and two FS93 daughters as well! Seeker has National Show 1<sup>st</sup> place Dam & Daughter, and Produce of Dam wins to her credit too! How a show doe can tell the difference between getting ready for Nationals and a regular show, I don't know, but Seeker did. She'd had a bad kidding that last year and was pretty thin, so we intended to retire her. She was living in the back of the barn, raising a foster kid with other geriatrics. As our club show season ended and we started to gear up towards Nationals, she began gaining weight, and spent a lot of time on the gate watching the preparations. When the morning to leave came, she simply detoured from her milkstand, and loaded herself in the trailer! Unlike her daughters, Seeker loved attention and travelling. She thoroughly enjoyed herself at Nationals, both in the ring and with spectators. She pulled the same trick at our appraisal session that year, earning back her FS93, then followed that with back to back BOB wins at the Oregon State and Washington State Fairs to top off an illustrious career.

Known for her dairyness, Seeker was a long framed doe, with a smooth, uphill front end, straight back, and a well attached udder with an especially high rear udder. Seeker's records speak for her, but now her genetic strength and depth of pedigree is worth more than her own wins. She has four wonderful daughters and a son in our herd, with a final score average of 91.8, and a lactation average of 3404. See below for some of their highlights, or refer to their individual pages for their complete records. Limited semen is available from her son, Kentucky Win.

ss- SG++\*B Sartyr Cascade Pharo  
s-SG++\*B Briarwinds Pharo Talut  
 '03 & '05 ADGA National Show Premier Sire  
 Sire of 6 National Show class winners  
 Top Ten daughters Elentara, Ellessea and Kaza  
 LA appraisal 7 daughters FS 90-92, all with E mammary!  
 7 GCH daughters  
sd- GCH Briarwind Shiloh Tasmin 5\*M  
 3-11 305 4310 180 4.2% 142 3.3%  
 '97 Top Ten #1 Protein, FS 88 +EEE

ds-+\*B des Ruhigestelle Elwah  
 At least 2 GCH daughters, twin to dR Elowah 7\*M  
 3-00 305 5450 216 4.0% 159 2.9%  
 '01 Top Ten, #1 milk, #1 protein, #2 fat  
d-GCH des Ruhigestelle Winswept 2\*M  
 5-4 FS90 VEEE 4-11 305 3412 121 3.5% 92 2.7%  
dd-GCH des Ruhigestelle Winner \*M  
 LA 6-6 FS91 EEEE  
 2-11 305 3601 117 103, 3-11 309 3458 116 95  
 5-01 305 3673 139 96 - '95 Top Ten  
 Lifetime 1947 20303 663 3.3% 566 2.8%  
 '93 CANADIAN NATIONAL WEST GRAND  
 CHAMPION and Best Udder in Show  
 '94 ADGA NATIONAL 2nd place 4yr old  
 Reserve Best Saanen Udder  
 also Highest Individual Lactation  
 '95 ADGA NATIONAL 2<sup>nd</sup>/2nd aged doe  
 '95 & '96 Washington State Fair BIS-490 entries

## Seeker progeny-

**SGCH dR WinCatcher 4\*M**  
 3-6 FS93 EEEE, 4-5 FS93 EEEE, 5-5 FS92 EEEE  
 2-00 305 3872 128 3.3% 111 2.9%  
 3-00 305 3911 112 2.9% 103 2.6%  
 '12 3xGCH, 3xRSGCH, 6<sup>th</sup> place 3 yr old and  
 1<sup>st</sup> Dam & Daughter- ADGA Nationals  
 '13 ADGA National Champion & Best Udder

**SG dR WinCaller 4\*M (Elite doe)**  
 4-6 FS90 VEVE  
 1-04 305 3693 123 3.3 113 3.1  
 ext 608 6943 235 3.4% 218 3.1%  
 3-02 305 3529 108 3.1% 96 2.7%

**SG dR WinClimber 4\*M (Elite doe)**  
 4-6 FS93 EEEE  
 1-04 305 3362 103 3.0 100 3.0  
 ext 615 6470 201 3.1% 195 3.0%  
 3-01 305 3746 106 2.8% 104 2.8%  
 '12 5x1st, 1x RSGCH  
 '12 1<sup>st</sup> place 2 yr old at OR & WA State Fairs  
 '13 1xRGCH, 1x BUIS

**GCH dR WinRiver 4\*M**  
 3-6 FS92 EEEE  
 1-03 305 2269 77 3.4% 65 2.9% inc  
 '12 1<sup>st</sup> place/1<sup>st</sup> udder milking yrlg WA State Fair  
 '13 3xGCH, 1xBIS  
 1<sup>st</sup>/1<sup>st</sup> udder 2 yr old, ADGA Nationals

**+\*B dR Kentucky Win**  
 3-6 FS91 EEE  
 4 GCH daughters, 3 FS90-91 daughters



'12 Nationals 1st place Dam & Daughter, Catcher (L) & Seeker (R)



'13 Nationals 1st place Produce, River (L) & Catcher (R)

## SGCH DES RUHIGESTELLE ELENDILI 8\*M

born 2/04 American ID 426 TPS 115



'08 ADGA National Show 3<sup>rd</sup> place 4 yr old  
Member 1<sup>st</sup> place Dairy Herd  
Dam of 1<sup>st</sup> place Produce of dam  
1<sup>st</sup> place Dam & Daughter (w/ Elende)  
High 305 day Milk & Fat Awards

## Elite doe (deceased)

LA 2-3 FS89 VEEV 5-5 FS91 VEEE  
3-3 FS89 VEEE 6-5 FS92 EEVE  
4-5 FS90 EEEE  
2-00 305 3238 108 3.3% 95 2.9%  
**3-00 302 4005 151 3.8% 118 2.9% '07 Top Ten**  
4-00 283 3478 127 3.7% 105 3.0%  
5-00 296 3588 130 3.6% 106 3.0%  
6-01 291 2965 102 3.4% 84 2.8%  
7-11 206 1684 52 3.1% 52 3.1% (1/2 udder)  
Lifetime  
**1876 21195 743 3.5% 623 3.0%**

'06 2xRSGCH, 3x1st, 4x2nd  
'08 4xGCH, 3xBOB, 2xBUOB, 2xBIS  
'09 GCH- Western WA State Fair

'09 ADGA National Show 2<sup>nd</sup> /3<sup>rd</sup> udder 5-6 yr old  
Member 2<sup>nd</sup> place Dairy Herd  
Member 2<sup>nd</sup> place Breeder's Trio  
Dam of 1<sup>st</sup> place Produce of dam  
1<sup>st</sup> place Dam & Daughter (w/ Elende)  
**WINNER-SAANEN TOTAL PERFORMER AWARD**

Winning Total Performer at the 2009 National Show was the highlight of Elendili's show career and it describes this doe better than any other award. She was truly a total package. Dili's performance has included a Top Ten milk record, a FS92 appraisal, BIS wins over both Winseeker and Tokay, and SGCH daughters with LA scores of FS92 & 93, and their own Top Ten records! Those daughters have twice earned her 1st place Produce of Dam and Dam & Daughter at National shows. It was a very exciting moment for us to have three generations in the '09 National champion line up- Elendili as 2<sup>nd</sup> 5-6 yr old, Elende as 2<sup>nd</sup> 3 yr old, and Elenwe as 1<sup>st</sup> milking yearling! A devastating reaction to a routine dry treatment cost Dili half of her udder, and nearly her life just a few months later. She became our most valued brood doe. (And as a terribly spoiled pet...) Now, Dili's daughters are carrying the torch, with Elende winning Total Performer and 1<sup>st</sup> Dam & Daughter at the 2013 Nationals. Dili's 'Elite Genetics' son, Elander, is the sire of SGCH dR WinCatcher 4\*M, 2013 National Champion and FS93 EEEE.

ss-SG++\*B Willow Run DRZ Atlas  
s-SG+\*B Companeros Jude  
sd-SGCH Companeros Katsuo Jordan 8\*M  
LA 5-10 FS89 VEEE  
Lifetime 1431 13290 490 3.7% 409 3.1%  
'02 ADGA Reserve National Champion  
Dam of 2010 Reserve National Champion  
SGCH Companeros Clinton Jewel 9\*M

ss-SG++\*B Briarwinds Pharaoh Talut  
'03 & '05 ADGA National Show Premier Sire  
Sire of 6 National Show class winners  
Top Ten daughters Elentara, Ellessea and Kaza  
LA appraisal 7 daughters FS 90-92,  
7 GCH daughters

### d-SGCH des Ruhigestelle Elentara 7\*M

7-11 FS91 EEEE  
5-07 305 3719 156 4.2% 111 3.0% '05 Top Ten  
lifetime to date 1926 20196 742 3.7% 612 3.0%  
dd-SG des Ruhigestelle Elf 6\*M  
3 FS90-91 daughters, two Top Ten daughters  
4 daughters over 3100 lbs milk  
dam of dR Elowah 7\*M  
3-00 305 5450 216 4.0% 159 2.9%  
'01 Top Ten, #1 milk, #1 protein, #2 fat



## SGCH DES RUHIGESTELLE RIAH \*M

born 4/07 American ID 786



de



Riah 3 yrs

LA 2-4 FS88 VVEV 3-4 **FS90 VVEE**  
**4-3 FS92 EEEE** 5-4 **FS92 EEEE**  
**6-3 FS92 EEEE** 7-3 **FS92 EEEE**  
**8-3 FS92 EEEE**

'10 3xGCH, 2xBUOB, 1xBUIS, 8xRSGCH  
 '11 shown once, RSGCH W.WA State Fair

Riah 5 yrs

1-10 305 3059 102 3.5% 90 3.0%  
 2-09 305 3824 129 3.4% 109 2.9%  
**3-10 305 4755 166 3.5% 132 2.8% '11 Top Ten**  
 336 5010 174 3.5% 140 2.8%  
**4-11 304 4057 126 3.1% 109 2.7% '12 Top Ten**  
 334 4269 132 3.1% 116 2.7%  
 5-11 268 2989 92 3.1% 78 2.6%  
 6-09 305 3393 105 3.1% 88 2.6%  
 7-11 305 2817 80 2.8% 76 2.7%  
 ext 327 2971 84 2.8% 80 2.7%  
**lifetime to date 2233 25827 829 3.2% 710 2.8%**

FS92 and 4,700 lbs of milk!!! Riah is from our old "money" line, granddaughter to SGCH dR Cash Bonus 5\*M. We were afraid we had lost this line, but it looks like Riah is just what we were waiting for. Riah is a strong, solid doe, with a strong, level lactation. She has a capacious udder with a tremendous area of attachment, with a particularly long and smooth foreudder. She also has very correct teat placement, and a nice, smoothly blended rear udder. She is correct in general appearance, with strong feet and legs, and E in head, front end, legs, back and texture. She is extremely deep and powerful in her front end. She's a steady, high production doe in the parlor, with a high test of 20.8 lbs and still milking 14 lbs in Nov! Sure, we'd like to make her sharper and more open, but can't complain about her production or dairy strength. We are very pleased with her son Trademark, a tall, long and correct AI son of dR Enoch, son of our 5,400 lb, FS90 doe, Elowah. Riah is confirmed bred for a Sept freshening.

ss-SG++B Windsor Manor Dreammaker  
s-SG+\*B Loughlin's Foxmaker  
sd-SGCH Loughlin's She'sastonecoldfox  
 FS91 EEEE

ds-+\*B des Ruhigestelle Rising Sun  
 twin to SGCH dR Sunbreak 8\*M  
 sire of SGCH dR Elende 9\*M  
d-SG des Ruhigestelle Dividend  
dd-SGCH des Ruhigestelle Cash Bonus 7\*M  
 LA 3-5 **FS90 VEEE**  
 2-11 294 3499 114 3.3% 99 2.8%  
 3-10 305 3566 112 3.1% 104 2.9%

## GCH DES RUHIGESTELLE ELENDARA 8\*M DES RUHIGESTELLE ELEDAKI 8\*M

born 3/08 American ID871 & 872



Elendaki (2 yrs)

LA 3-3 **FS91 EEEE 4-4 FS91 EEEE**  
2-09 305 2581 89 3.4% 69 2.7% (1/2 udder)  
3-10 274 2525 87 3.5% 66 2.6% (1/2 udder)  
1xGCH, 1xRSGCH (to Dara) before losing udder 1/2



Elendara (4 yrs)

LA 3-3 **FS92 EEEE, 4-4 FS92 EEEE, 5-3 FS92 EEEE**  
**2-09 305 3472 119 3.4% 102 2.9%**  
3-10 277 2664 95 3.4% 78 2.9%  
4-09 228 2337 71 3.0% 66 2.8%  
'12 5xGCH, 1xRSGCH, 3xBOB, 3xBUOB, 2xBIS  
ADGA Nationals 2<sup>nd</sup>/2<sup>nd</sup> udder 4 yr old  
'13 1xGCH & BOB, ADGA Nat'ls 3<sup>rd</sup>/3<sup>rd</sup> udder 5-6 yr old

This is a powerful set of twins. Deep and wide, long and level, they are correct on their feet and legs and both have (okay, had) beautifully attached udders with especially long foreudders. Unfortunately, Daki had to be masectomized last year, after having had only one side for a couple years. Dara is the fancier of the two, with a more level topline and nicer teat placement from the side, while Daki wants to be the higher production doe. Spectators at shows are drawn to Dara for her levelness, depth of body, and length of foreudder, while farm visitors are usually more impressed with Daki's width and strength. We just like them both! Their litter brother, Eosef, has already sired some very promising young does, including GCH WinRiver, our National Show 1<sup>st</sup>/1<sup>st</sup> udder 2 yr old.

ss-SG++B Windsor Manor Dreammaker  
s-SG+\*B Loughlin's Foxmaker  
sd-SGCH Loughlin's She'sastonecoldfox  
FS91 EEEE

ds-SG++\*B Briarwinds Pharaoh Talut  
'03 & '05 ADGA National Show Premier Sire  
Sire of 6 National Show class winners  
Top Ten daughters Elentara, Ellessea and Kaza  
LA appraisal 7 daughters FS 90-92, all with E mammary!  
7 GCH daughters

### d-SGCH des Ruhigestelle Elentara 7\*M

7-11 **FS91 EEEE**  
5-07 305 3719 156 4.2% 111 3.0% '05 Top Ten  
lifetime to date 1926 20196 742 3.7% 612 3.0%

### dd-SG des Ruhigestelle Elf 6\*M

3 FS90-91 daughters, two Top Ten daughters  
4 daughters over 3100 lbs milk  
dam of dR Elowah 7\*M  
3-00 305 5450 216 4.0% 159 2.9%  
'01 Top Ten, #1 milk, #1 protein, #2 fat



## SGCH DES RUHIGESTELLE ELENDE 9\*M

born 2/06 American ID 629 TPS 107



1-01 223 1683 51 3.0% 52 3.1%  
1-11 305 3657 112 3.1% 112 3.1%  
3-00 296 3240 98 3.0% 99 3.0%  
4-00 305 3363 98 2.9% 94 2.8%  
**5-00 305 4132 127 3.1% 113 2.7% \*\* "11 Top Ten"**  
6-10 305 3422 106 3.1% 94 2.7%  
8-00 305 3700 112 3.0% 98 2.7%  
9-00 278 2283 62 2.7% 63 2.8%

**Lifetime 2468 26856 811 3.0% 763 2.9%**

Elende exemplifies our goals, with strong performance in the showing and milkroom, and as a consistent brood doe. She is sharp, clean and level, with a rump width score of 45, and a smoothly attached udder with E texture. Even with four different sires, her daughters, SGCH Elenwe FS91 EEEE (also '11 Top Ten), SGCH Elenya FS93 EEEE, SGCH Euterpe FS93 EEEE, GCH Elixer FS93 EEEE, and SGCH Eigeria FS92 EEEE show her beautiful style and consistent, level lactations, with even better rear udders and teats, making her one of our best brood does.

ss-\*B des Ruhigestelle Lochivar

s-+\*B des Ruhigestelle Rising Sun

twin to GCH dR Sunbreak 8\*M

sd-GCH des Ruhigestelle Sunset 7\*M

3-5 FS 89 VEEV  
2-10 305 3725 124 3.3% 109 2.9%  
2xGCH, 2xBOB, 6xRSGCH

(deceased, reference only)

LA 1-3 FS88 VVVV 2-5 **FS90 EVEE**  
3-5 FS89 VVEV **4-5 FS92 EEEE**  
**5-5 FS92 EEEE 7-4 FS92 EEEE**  
**8-4 FS92 EEEE 9-4 FS91 EEEE**

'07 4<sup>th</sup> milking yearling ADGA Nationals  
1<sup>st</sup>/1<sup>st</sup> udder Sonoma Co Fair,  
1<sup>st</sup>/1<sup>st</sup> CA State Fair Saanen Specialty  
1<sup>st</sup>/1<sup>st</sup> W WA State Fair

'08 2xGCH, 4xRSGCH, 8x1st  
GCH-Western WA State Fair

'09 1xGCH, 1<sup>st</sup>/1<sup>st</sup> 3 year old, W. WA State Fair

'10 1xBOB

'11 5xBOB, 3xBIS, 2xBUIS, BOB- W. WA State Fair

**'08 ADGA Nationals 1<sup>st</sup>/1<sup>st</sup> udder 2 yr old**

**Member 1<sup>st</sup> Breeder's Trio and 1<sup>st</sup> Dairy Herd**

**Member 1<sup>st</sup> Produce and Dam and Daughter**

**'09 ADGA Nationals 2<sup>nd</sup> place 3 yr old**

**Member 2<sup>nd</sup> Breeder's Trio and 2<sup>nd</sup> Dairy Herd**

**'13 ADGA Nationals 1<sup>st</sup>/1<sup>st</sup> udder 7 yr old**

**Total Performer Award**

**Member 1<sup>st</sup> Breeder's Trio and 1<sup>st</sup> Dairy Herd**

**1<sup>st</sup> place Dam and Daughter, 2<sup>nd</sup> Produce**

**'13 & '14 Oregon State Fair Total Performer**

**'14 WA State Fair & District VII Saanen Specialty RSGCH**

**1<sup>st</sup> Produce, Dam & Daughter, and Dairy Herd**

ds-SG+\*B Companeros Jude

2 SGCH daughters, 1 FS93 daughter

d-SGCH des Ruhigestelle Elendili 8\*M

**6-5 FS92 EEEE**

**3-00 302 4005 151 3.8% 118 2.9% '07 Top Ten**

**Lifetime 1787 20024 704 3.6% 591 3.0%**

**'08 ADGA National Show 3<sup>rd</sup> place 4 yr old**

**'09 ADGA National Show 2<sup>nd</sup> place 5-6 yr old**

**Dam of 1<sup>st</sup> place Produce of dam, both '08 & '09**

**1<sup>st</sup> place Dam & Daughter (w/ Elende), both '08 & '09**

**High 305 day Milk & Fat Awards '09**

**Winner- Total Performer Award '09**

dd-SGCH des Ruhigestelle Elentara 7\*M

**7-11 FS91 EEEE**

**5-07 305 3719 156 4.2% 111 3.0% '05 Top Ten**

**lifetime to date 1926 20196 742 3.7% 612 3.0%**

**'01 GCH District 7 Saanen Specialty**

**'03 BOB District 7 Saanen Specialty**

**'03 ADGA Nationals 1<sup>st</sup> place 4 yr old**

**'05 ADGA Nationals 1<sup>st</sup>/1<sup>st</sup> udder 5-6 year old**

## SGCH DES RUHIGESTELLE ELENDEA 9\*M *Elite doe* (deceased, reference only)

born 2/07 American ID 715 TPS 113



LA 1-5 FS88 VVVE

**2-5 FS92 EEEE**

**3-5 FS93 EEEE**

1-01 277 2650 87 3.3% 85 3.2%

**2-00 305 3950 138 3.5% 123 3.1% \*\* '09 Top Ten**

**3-00 305 4110 126 3.1% 122 3.0% \*\* '10 Top Ten**

Lifetime 1178 14049 460 3.3% 432 3.1%

'08 5x 1<sup>st</sup> place milking yearling

ADGA Nationals 7<sup>th</sup> milking yearling,

Member 1<sup>st</sup> Produce (dam-Elendili)

'09 6xGCH, 2xRSGCH, 3xBUOB, 1xBUIS

ADGA Nationals 6<sup>th</sup> place 2 year old,

Member 1<sup>st</sup> Produce (dam-Elendili)

'10 BOB- REDGA, RSGCH-District 7 Saanen Specialty

'Drea went from a favorite yearling to one of our largest, most powerful and productive does. She is a 3/4 sister to Elende. The pair are very similar, with Elendrea being a bit larger, with more body and substance. 'Drea's rear udder and teat placement were the best we've had, with tremendous height, width and smoothness. She has had test days over 20 lbs, and has maintained excellent production late into her lactation. 'Drea sadly lost one side to enterococcus mastitis in 2011. Even though she was milking 12-14 lbs, from the remaining side, we finally did a complete mastectomy on her to stop the risk of her shedding any bacteria. She will remain as a valued brood doe. Though she likes to have multiple buck kids, she kidded with triplet does in '14, and we kept all of them! They are now all fresh and are very exciting. They are now all GCH does, all FS92 and well over 3500 lbs milk!

### ss-+\*B des Ruhigestelle Rising Sun

twin to SGCH dR Sunbreak 8\*M

sire of SGCH dR Elende 9\*M

### s-\*B des Ruhigestelle Carlos

#### sd-SGCH des Ruhigestelle Nashville 7\*M

3-1 **FS92 EEEE**, 5-3 **FS91 VEEE**, 6-3 **FS92 EEEE**

**2-10 305 4368 157 3.6% 128 2.9% '07 Top Ten**

'06 2xGCH, 1xRSGCH, 1xBOB, 4x1<sup>st</sup>, 2x2<sup>nd</sup>,  
1<sup>st</sup>/1<sup>st</sup> Sonoma Co Fair (Feature Breed)

'06 GCH/BOB Western WA State Fair,  
member Best Dairy Herd in Show

'07 1xGCH & BIS, 1xRSGCH,  
1<sup>st</sup>/1<sup>st</sup> 3 yr old Sonoma Co  
1<sup>st</sup>/1<sup>st</sup> 3yr old CA State Fair Saanen Specialty

Member California State Fair-

Supreme Best Three Females

BOB-Western WA State Fair

### ds-+\*B Companeros Jude

2 SGCH daughters, 1 FS93 daughter

#### d-SGCH des Ruhigestelle Elendili 8\*M

**6-5 FS92 EEEE**

**3-00 302 4005 151 3.8% 118 2.9% '07 Top Ten**

Lifetime to date 1787 20024 704 3.6% 591 3.0%

'08 ADGA National Show 3<sup>rd</sup> place 4 yr old

'09 ADGA National Show 2<sup>nd</sup> place 5-6 yr old

**Dam of 1<sup>st</sup> place Produce of dam, both '08 & '09**

**1st place Dam & Daughter (w/ Elende), both '08 & '09**

**High 305 day Milk & Fat Awards '09**

**Winner- Total Performer Award '09**

#### dd-SGCH des Ruhigestelle Elentara 7\*M

**7-11 FS91 EEEE**

**5-07 305 3719 156 4.2% 111 3.0% '05 Top Ten**

lifetime to date **1926 20196 742 3.7% 612 3.0%**

'01 GCH District 7 Saanen Specialty

'03 BOB District 7 Saanen Specialty

**'03 ADGA Nationals 1<sup>st</sup> place 4 yr old**

**'05 ADGA Nationals 1<sup>st</sup>/1<sup>st</sup> udder 5-6 year old**

## SGCH DES RUHIGESTELLE ELENWE 10\*M (deceased, reference only)

born 2/08 American ID 821



Elenwe- yearling



Elenwe- 5 yrs

1-02 305 2588 96 3.7% 80 3.1%  
ext 538 4258 156 3.7% 132 3.1%  
**2-10 305 3807 143 3.8% 105 2.8% '11 Top Ten**  
ext 688 7606 279 3.7% 215 2.8%  
4-11 305 3966 141 3.6% 103 2.6%  
ext 337 4224 150 3.6% 110 2.6%  
6-00 305 4058 127 3.1% 101 2.5%  
ext 341 4481 139 3.1% 112 2.5%  
**7-01 305 4352 130 3.0% 115 2.6%**  
ext 518 6915 216 3.1% 182 2.6%  
8-09 305 4609 140 3.0% 119 2.6%  
ext 311 4678 143 3.0% 120 2.6%  
**lifetime to date- 2733 33350 1118 3.4% 902 2.7%**

LA 1-6 FS88 VVEE 3-5 FS89 VEVV  
2-6 **FS90 VEEE** 4-6 **FS91 EEEE**  
**5-5 FS91 VEEE** 6-5 FS90 VEEE,  
**7-5 FS90 VEEE**  
'09 9x1st milking yearling,  
**1<sup>st</sup>/1<sup>st</sup> udder ADGA Nationals**  
GCH/BOB/BIS (milking yearling!)-Humboldt Co  
RSGCH- Western WA State Fair  
'10 1xGCH to finish her SGCH (milking through!)  
'12 Oregon State Fair RSGCH  
Member Supreme Breeder's Trio  
'12 WA State Fair RSGCH, Res BUOB  
'13 **1<sup>st</sup>/1<sup>st</sup> udder 5-6 yr old ADGA Nationals**  
**Member 1<sup>st</sup> place Dairy Herd**

Elenwe never quite gets the attention she deserves. Not only is she an Elende daughter, she is a fourth generation Top Ten and EX doe! She is also a paternal sister to Elendara and Riah, with the same beautiful Foxmaker udder. She won the milking yearling class at Nationals in '09, and came back in '13 to win the 5-6 year old class, after milking a Top Ten record! She has her dam's classy general appearance, coupled with an extremely correct udder. She has a sharp clean bone pattern with plenty of strength and is especially sharp over her withers, with nice feet and legs. At 9 years old, she has milked **32,000 lbs**, and isn't slowing down a bit, as she just finished her best lactation yet! She has a steady lactation that lends itself to milking through. This is the kind of doe we like on our dairy!

ss-SG++B Windsor Manor Dreammaker  
s-SG+\*B Loughlin's Foxmaker  
sd-SGCH Loughlin's She'sastonecoldfox  
FS91 EEEE

ds-+\*B des Ruhigestelle Rising Sun  
twin to SGCH dR Sunbreak 8\*M  
d-SGCH des Ruhigestelle Elende 9\*M

**8-2 FS92 EEEE**  
1-11 305 3657 112 3.1% 112 3.1%  
5-00 305 4132 127 3.1% 113 2.7% '11 Top Ten  
'08 **ADGA Nationals 1<sup>st</sup>/1<sup>st</sup> udder 2 yr old**  
Member 1<sup>st</sup> Breeder's Trio, Dairy Herd, Produce, Dam & Dau  
dd- SGCH des Ruhigestelle Elendili 8\*M  
**6-5 FS92 EEEE**  
**3-00 302 4005 151 3.8% 118 2.9% '07 Top Ten**  
Lifetime to date 1787 20024 704 3.6% 591 3.0%



## SGCH DES RUHIGESTELLE WINCATCHER 4\*M (deceased, reference only)

born 2/09 American ID 912



LA 1-6 FS88 VEVE    2-5 FS91 VEEE    3-6 FS93 EEEE  
 4-6 FS93 EEEE    5-6 FS92 EEEE    6-6 FS91 VEEE  
 7-6 FS92 EEEE    8-6 FS92 EEEE    9-7 FS92 EEEE

1-02 251 1912 58 3.0% 56 2.9%  
 2-00 305 3872 128 3.3% 111 2.9%  
 3-00 305 3911 112 2.9% 103 2.6% ext 335 4247 122 113  
 4-01 283 2870 83 2.9% 76 2.7%  
 4-11 305 3283 103 3.1% 84 2.6% ext 339 3557 111 92  
 6-00 305 3586 112 3.1% 91 2.5% ext 332 3811 120 99  
 6-11 305 4143 124 3.0% 104 2.5% ext 384 4883 149 125  
 8-02 277 3091 97 3.1% 79 2.5%  
 9-00 227 2863 91 3.2% 81 2.8% (bred back early)  
**Lifetime - 3011 34264 1061 3.1% 924 2.7%**

'10 4x1st, 1<sup>st</sup>/1<sup>st</sup> udder milking yearling-  
 District 7 Saanen Specialty  
 '12 3xGCH, 3xRSGCH, 6<sup>th</sup> place 3 yr old  
 and 1<sup>st</sup> Dam & Daughter- ADGA Nationals  
 '13 1xBOB & BUOB,  
**ADGA NATIONAL CHAMPION  
 & BEST UDDER SAANEN**  
**Member 1<sup>st</sup> place Dairy Herd,  
 Breeder's Trio, and Produce of Dam**  
 '15 1xBOB, ADGA National Show 3<sup>rd</sup> place 5-6 yr old

SGCH, 2xFS93, 4100 lbs milk, over 30,000 lbs lifetime, a National Champion, and we still can't get a decent picture of her!!! Catcher is everything her dam was and more. She was a favorite of mine as a young doe, and now she is everything I hoped for. She is so correct, clean and dairy, with great depth and angularity, strength of bone, and that beautiful rear udder and teat placement. She's a strong doe in the parlor, with a consistent and steady lactation. She has scored FS93, twice! Unlike her mother, she just doesn't like to show. Still, in 2013 we couldn't resist taking her to Nationals, where she became a second generation National Champion!

ss-\*B des Ruhigestelle Carlos  
s-SG+\*B des Ruhigestelle Elander  
sd- SGCH des Ruhigestelle Elendili 8\*M Elite Doe  
 LA 4-5 FS90 EEEE, 5-5 FS91 VEEE, 6-5 FS92 EEEE  
**3-00 302 4005 151 3.8% 118 2.9% '07 Top Ten**  
 Lifetime **1876 21195 743 3.5% 623 3.0%**  
 '08 ADGA National Show 3<sup>rd</sup> place 4 yr old  
 '09 ADGA National Show 2<sup>nd</sup> place 5-6 yr old  
 Dam of 1<sup>st</sup> place Produce of dam, both '08 & '09  
 1<sup>st</sup> place Dam & Daughter (w/ Elende), both '80 & '09  
 High 305 day Milk & Fat Awards '09  
**Winner- Total Performer Award '09 Nationals**

ss-SG++\*B Briarwinds Pharaoh Talut  
**Elite Sire '03 & '05 ADGA National Show Premier Sire**  
 Sire of 6 National Show class winners  
 Top Ten daughters Elentara, Ellessea and Kaza  
 LA appraisal 7 daughters FS 90-92, all with E mammary!  
 7 GCH daughters  
d-SGCH des Ruhigestelle Winseeker 3\*M  
 4-5 FS93 EEEE, 7-2 FS92 EEEE, 8-3 FS93 EEEE  
**5-00 296 3501 140 4.0% 107 3.1% '09 Top Ten**  
 Lifetime 1918 20238 782 3.9% 616 3.1%  
**'08 ADGA NATIONAL CHAMPION & BEST UDDER SAANEN**  
**Member 1<sup>st</sup> Breeder's Trio and 1<sup>st</sup> Dairy Herd**  
dd-GCH des Ruhigestelle Winswept 2\*M  
**5-4 FS90 VEEE 4-11 305 3412 121 3.5% 92 2.7%**

# SGCH DES RUHIGESTELLE ELENYA 10\*M *Elite doe* (deceased, reference only)

born 3/09 American ID 946



Elenya 3 yrs

LA 1-5 FS89 VVVE **2-4 FS92 EEEE 3-5 FS91 EEEE**  
**4-4 FS92 EEEE 5-4 FS93 EEEE 6-4 FS93 EEEE**  
**8-4 FS92 EEEE 9-5 FS93 EEEE**

1-02 305 3219 106 3.3% 96 3.0% ext 570 5554 188 171  
 2-10 305 3629 121 3.3% 108 3.0% ext 386 4308 142 129  
 4-01 305 3077 101 3.3% 84 2.7%  
 4-11 305 3636 118 3.2% 95 2.6%  
 6-00 305 3843 121 3.1% 105 2.7%  
**6-11 305 4071 121 3.0% 106 2.6% ext 317 4193 124 109**  
 7-10 305 3801 119 3.31% 101 2.7% ext 317 3901 122 104  
 8-10 260 3202 103 3.2% 91 2.8% (bred back early)

**lifetime - 3108 35807 1151 3.2% 1003 2.8%**

'10 7x1st milking yearling in 7 shows

'11 1<sup>st</sup>/1<sup>st</sup> OR & W WA State Fairs, RSGCH OSF



Elenya 8 yrs

'12 3xGCH, 1xBIS, 1xBUIS,  
 3<sup>rd</sup> place 3 yr old, ADGA Nationals  
 '13 3<sup>rd</sup> place 4 yr old, ADGA Nationals,  
 member 1<sup>st</sup> place Dam & Daughter w/ Elende  
**'13 Oregon State Fair District VII Saanen Specialty**  
**GCH, BOB, BUOB**  
 '14 2xBOB, 2xBIS, GCH Oregon State Fair  
 2<sup>nd</sup> in BOB at the District VIII Saanen Specialty  
**'14 WA State Fair & District VII Saanen Specialty GCH,**  
**1<sup>st</sup> Produce, Dam & Daughter, and Dairy Herd**  
 '15 2xBOB, '15 WA State Fair GCH  
**'17 ADGA NATIONAL CHAMPION**  
**& RESERVE BEST UDDER SAANEN**

Always a favorite, our beautiful, arrogant, Elenya somehow became our oldest Saanen, though I dare anyone to call her geriatric. At 8 years old, she freshened with a single kid in January, travelled 5,000 miles to shows, won National Champion in Wisconsin, and still milked 3800 lbs! With 4 GCH daughters, and a passle of beautiful granddaughters and great granddaughters, Elenya has stepped up to brood doe status. Elenya earned our highest honor, that of being simply turned loose to do as she pleased. And for a year, she did just that, ruling the farm as an intelligent, mischievous, and spoiled herd queen. Elenya left us in October '21, we still miss her.

ss-SG++B Saanendoah Standard Issue  
s-SG+\*B Cherrypines Stand Out  
sd-SGCH Cherrypines Super Starlet

ds-+\*B des Ruhigestelle Rising Sun  
 twin to SGCH dR Sunbreak 8\*M  
d-SGCH des Ruhigestelle Elende 9\*M

**8-2 FS92 EEEE, 5-00 305 4132 127 3.1% 113 2.7% '11 Top Ten**  
 Lifetime 2468 26856 811 3.0% 763 2.9%

**ADGA Nationals- '08 1<sup>st</sup>/1<sup>st</sup> udder 2 yr old, '13 1<sup>st</sup>/1<sup>st</sup> 7+ doe**  
dd- SGCH des Ruhigestelle Elendili 8\*M

**6-5 FS92 EEEE**

**3-00 302 4005 151 3.8% 118 2.9% '07 Top Ten**

Lifetime to date 1787 20024 704 3.6% 591 3.0%

## **SGCH DES RUHIGESTELLE WINCLIMBER 4\*M Elite doe** (deceased, reference only)

born 1/10 American ID4



2-7 FS88 VEVE 3-6 FS91 VEEE  
4-6 FS93 EEEE 5-6 FS94 EEEE  
6-6 FS93 EEEE 8-7 FS92 VEEE

1-04 305 3362 103 3.0% 100 3.0%  
ext 615 6470 201 195  
3-01 305 3746 106 2.9% 104 2.8%  
ext 570 6223 173 174  
4-09 305 3645 98 2.7% 102 2.8%  
5-09 305 4225 114 2.7% 121 2.9%  
ext 325 4421 120 127  
6-11 305 4114 2.9% 120 2.8%  
ext 320 4239 124 119  
7-11 305 3829 119 3.1% 113 3.0%  
ext 429 4746 151 141  
9-7 275 2989 95 3.2% 86 2.9%  
**Lifetime to date 2881 33054 973 2.9% 954 2.9%**

3xGCH, 4xRSGCH, 1xBIS, 2xBUIS  
'15 ADGA National Show 4<sup>th</sup> place 5-6 yr old

Climber was an ugly duckling yearling, then filled out to be one of our best. She is simply incredible in her dairy strength and frame. Her rear udder is pretty amazing too, high and wide with tremendous capacity. She surprised us with a FS93 as a 4 yr old on a milk through lactation, then moved up to FS94 the next year! Unfortunately, like her older sister, Catcher, she just hated to show. She is very productive in the milkroom, with nice level lactations that lend themselves to extended lactations. Daughter of a National Champion, maternal sister to another, dam of the '17 Reserve National Champion, and granddam of the '19 National Champion, Climber is following her dam line in some genetically strong and consistent hoofsteps. We are excited about her ET son, WinRuler (co-owned with LS Simply Homestead), a full brother to Social Climber and WinWalker!

ss-+\*B Willow Run Victor Sloan  
s-SG+\*B des Ruhigestelle Elros Elite buck

3-4 FS91 EEE

At least 5 GCH daughters

sd-SG des Ruhigestelle Elfin 7\*M

6-4 FS91 EEEE

1-11 305 3226 132 4.1% 96 3.0%

ss-SG++\*B Briarwinds Pharaoh Talut

(see Elentara, Llyonesse, Winseeker)

d-SGCH des Ruhigestelle Winseeker 3\*M

4-5 FS93 EEEE, 6-5 FS92 EEEE, 7-2 FS92 EEEE, 8-3 FS93 EEEE

5-00 296 3501 140 4.0% 107 3.1% '09 Top Ten

Lifetime to 1918 20238 782 3.9% 616 3.1%

**'08 ADGA NATIONAL CHAMPION & BEST UDDER SAANEN**

dd-GCH des Ruhigestelle Winswept 2\*M

5-4 FS90 VEEE 4-11 305 3412 121 3.5% 92 2.7%



**SGCH DES RUHIGESTELLE ELIXER 10\*M** (deceased, reference only)  
born 2/11 American ID148



Age 3 yr



Appraisal day, FS93 EEEE, age 6yr

1-5 FS88 VVVE, **2-4 FS91 VEVE**  
**3-4 FS92 EEEE, 4-4 FS92 EEEE**  
**5-4 FS91 EEEE, 6-4 FS93 EEEE**  
**7-5 FS93 EEEE, 8-6 FS92 EEEE**

1-04 279 2158 58 2.7% 63 2.9%  
2-02 286 2738 73 2.7% 74 2.7%  
3-01 305 3350 84 2.5% 91 2.7%  
ext 321 3471 87 2.8% 94 2.7%  
4-01 305 3500 89 2.5% 95 2.7%  
ext 328 3637 93 2.6% 100 2.8%  
5-00 279 3021 71 2.4% 80 2.7%  
6-00 305 3597 95 2.7% 95 2.6%  
ext 310 3634 96 2.7% 96 2.6%  
7-00 295 3407 90 2.7% 92 2.6%  
7-11 305 3242 80 2.5% 87 2.7%  
9-00 243 3216 82 2.5% 84 2.5%  
10-0 305 3206 103 3.2% 91 2.8%  
11-1 305 3597 113 3.1% 101 2.8%

**Lifetime to date- 3361 36105 974 2.7% 987 2.7%**

Where does the time go? Elixer has always been the 'young one', now somehow she's 12 years old and has milked over 36,000 lbs! She is one of those does that started out immature and yet had all the right pieces. Each year she added something more, until she became one of our best. Her high wide rear udder and extension of foreudder is exemplary. Fully mature, she has become one of our deepest and most powerful does, yet retains her lovely femininity. Her daughters Eliza, Eteri and Elexis have all scored EX90-92, and Eliza is now **'21 RESERVE NATIONAL CHAMPION!** A strong, deep pedigree, sound conformation with beautiful style, high production over many years, a phenomenal brood doe, and a gentle temperament, Elixer has excelled in every category. Note- Elixer has averaged 10.7 lbs of milk per day for TWELVE years!

ss-++\*B Old English Emperor  
s-++\*B Old English Clinton

Sire of 2010 National and Reserve National Champions-

SGCH Sartyr Clinton Tivoli

SGCH Companeros Clinton Jewell

sd-GCH Old English Coleen 2\*M

5-5 FS90 VEEE

'12 Oregon State Fair 1<sup>st</sup> milking yearling  
'13 REDGA- 4x1<sup>st</sup>, 1xGCH, 2xRSGCH,  
NWODGA- 2xGCH, 1xBOB

**ADGA National Show 2<sup>nd</sup>/2<sup>nd</sup> udder 2 yr old**  
(behind River), member 2<sup>nd</sup> Produce of Dam  
'14 WA State Fair & D7 Saanen Specialty BOB,  
BUOB, BUIS

'14 REDGA & D7 Saanen Specialty RSGCH

'15 1xBOB, 2xBUOB, RBUOB WA State Fair

**'17 1<sup>st</sup>/1<sup>st</sup> udder 5-6 yr old ADGA Nationals**

member 1<sup>st</sup> Produce of Dam, 1<sup>st</sup> Dairy Herd

'18 5xBOB, 1xBIS BOB/BUOB WA State Fair

**'19 2xBOB/BUOB/BIS/BUIS including D7 Saanen Specialty**

**'19 2<sup>nd</sup>/3<sup>rd</sup> udder Aged doe ADGA Nationals**  
**1st place Dam & Daughter with Eliza**

ds-\*B des Ruhigestelle Rising Sun  
d-SGCH des Ruhigestelle Elende 9\*M

8-2 FS92 EEEE, 3 FS93 daughters!

5-00 305 4132 127 3.1% 113 2.7% '11 Top Ten

dd- SGCH des Ruhigestelle Elendili 8\*M

6-5 FS92 EEEE

3-00 302 4005 151 3.8% 118 2.9% '07 Top Ten

**SGCH DES RUHIGESTELLE WINWALKER 5\*M Elite doe!** (deceased, reference only)

born 3/13 American ID333



Walker 2 yrs (10 mos fresh)



Walker 4 yrs

LA 2-4 FS89 EEEE, **3-4 FS92 EEEE, 4-4 FS92 EEEE, 5-5 FS91 EEEE (stale)**

1-05 305 3111 94 3.1% 88 2.1% ext 406 3950 123 115

2-08 305 3782 121 3.2% 107 2.8% ext 352 4171 133 119

3-11 305 4612 144 3.1% 126 2.7% ext 613 8016 250 224

Lifetime to date 1371 16137 506 3.1% 458 2.8%

*'15 first show- 2xGCH/BOB, 1x BIS, to earn her GCH as a first freshener, 8 months fresh!!!*

**'15 ADGA National Show 1<sup>st</sup>/ 2<sup>nd</sup> udder 2 yr old**

'16 2xBOB, 1xBUOB

'17 2xBOB, 2xBUOB, 1xBIS, 1xBUIS,

**'17 ADGA RESERVE NATIONAL CHAMPION & BEST UDDER SAANEN**

**Dam 1<sup>st</sup> place dam & daughter**

'18 Washington State Fair 1<sup>st</sup>/1<sup>st</sup> udder 5-6 yr old

Walker has the classic 'Win' length and style, with a super high and wide rear udder. Though she freshened first in November, having enough milk to show was no problem, with 3,000 lbs in her first 305 from a steady 10 lb average. Defying the "Junior Champion Curse," Walker went from Jr Ch and BJDIS as a kid at the '13 Oregon State Fair to 1<sup>st</sup> place 2 yr old at '15 Nationals, while on an extended lactation! Fast forward two years, and she was selected as '17 Reserve National Champion, and with her 1st place milking yearling daughter, won the dam and daughter class! Walker is a high production doe with a high test over 18 lbs and a nice steady lactation. High production in a beautiful package, and able to reproduce herself, Walker is one of my all time favorite does.

ss-++\*B Old English Clinton

Sire of 2010 National and Reserve National Champions-

SGCH Sartyr Clinton Tivoli

SGCH Companeros Clinton Jewell

s- +\*B des Ruhigestelle Element

sd-SGCH des Ruhigestelle Elende 9\*M

**8-2 FS92 EEEE**

**5-00 305 4132 127 3.1% 113 2.7% '11 Top Ten**

ds-SG+\*B des Ruhigestelle Elros Elite buck

**3-4 FS91 EEE**

**At least 5 GCH daughters**

d- SGCH des Ruhigestelle WinClimber 4\*M \*Elite doe\*

**5-6 FS94 EEEE**

5-09 305 4225 114 2.7% 121 2.9%

Lifetime to date **1838 20922 597 2.9% 603 2.9%**

dd-SGCH des Ruhigestelle Winseeker 3\*M

**4-5 FS93 EEEE, 8-3 FS93 EEEE**

**5-00 296 3501 140 4.0% 107 3.1% '09 Top Ten**

Lifetime to 1918 20238 782 3.9% 616 3.1%

**'08 ADGA NATIONAL CHAMPION & BEST UDDER SAANEN**

## SGCH DES RUHIGESTELLE ELENI 11\*M

born 4/13 American ID361



LA 2-3 FS89 VEEE, **3-3 FS93 EEEE,**  
**4-3 FS92 EEEE, 5-4 FS92 VEEE**

1-11 253 1746 55 3.2% 54 3.1%  
2-11 305 3598 118 3.3% 110 3.0% ext 319 3704 122 114  
3-11 305 3517 121 3.4% 106 3.0% ext 844 7799 276 241  
Lifetime to date 1444 13441 461 3.4% 416 3.1%

**'14 WA State Fair & District VII Saanen Specialty Jr CH**

**'15 2x1st, 1xRSGCH**

**'16 2xGCH & BDIS**

**'16 Oregon State Fair BOB/BUOB**

**'16 Washington State Fair GCH (BOB), BUOB**

**'17 ADGA National Show 2<sup>nd</sup>/3<sup>rd</sup> udder 4 yr old**

Eleni is a big strong doe that is deceptively dairy and sharp. She has an incredible udder with beautiful shape and a long foreudder. She lacked capacity for her size as a 2 yr old, as a 3 yr old she came in milking 16 lbs and walked away with 2xBIS at her first show to finish her GCH. She is best described by a farm visitor when he commented 'Holy, err.. foreudder!' Like her dam, Eleni has progressed to being a solid brood doe with daughters Elenomi FS92, Elenice FS93 EEEE and first freshener Electra FS89 EEEE.

**NEWS UPDATE-** Eleni has had chronic metritis and likely will never kid again, but she was a ROCKSTAR at IVF with several embryos, now two years in a row! Thank you TransOva and modern reproductive technology! And Stephanie Rovey for providing the facilities to make this happen! Due to the events of 2020-21, we all needed to cut back a bit and didn't do any IVF in '21, and sadly, she was unable to be flushed in '22.

### ss- SG+\*B Loughlin's Foxmaker

multiple GCH daughters

### s- +\*B des Ruhigestelle Eosef

#### sd-SGCH des Ruhigestelle Elentara 7\*M

**7-11 FS91 EEEE**

**5-07 305 3719 156 4.2% 111 3.0% '05 Top Ten**

lifetime to date **1926 20196 742 3.7% 612 3.0%**

**'01 GCH District 7 Saanen Specialty**

**'03 BOB District 7 Saanen Specialty**

**'03 ADGA Nationals 1<sup>st</sup> place 4 yr old**

**'05 ADGA Nationals 1<sup>st</sup>/1<sup>st</sup> udder 5-6 year old**

### ds-SG+\*B Cherrypines Stand Out

multiple GCH and National CH daughters

### d- SGCH des Ruhigestelle Elenya 10\*M

**5-4 FS93 EEEE 6-4 FS93 EEEE 9-5 FS93 EEEE**

**6-11 305 4071 121 3.0% 106 2.6%**

**lifetime to date- 2981 34212 1100 3.2% 959 2.8%**

**'17 ADGA NATIONAL CHAMPION**

**& RESERVE BEST UDDER SAANEN**

3 GCH daughters

#### dd-SGCH des Ruhigestelle Elende 9\*M

**8-2 FS92 EEEE**

**1-11 305 3657 112 3.1% 112 3.1%**

**5-00 305 4132 127 3.1% 113 2.7% '11 Top Ten**

**'08 ADGA Nationals 1<sup>st</sup>/1<sup>st</sup> udder 2 yr old**

**Member 1<sup>st</sup> Breeder's Trio and 1<sup>st</sup> Dairy Herd**

**Member 1<sup>st</sup> Produce and Dam and Daughter**



**'THE TRIPLETS'** **GCH TEMPO PASSA EVITA 10\*M** (retired) See individual records  
**Now all FS92 EEEE!** **SGCH TEMPO PASSA ETIENNE 10\*M** (deceased) next page  
**GCH TEMPO PASSA EVIENNE 10\*M** (deceased)  
 born 2/14 American ID 433, 434, 435



L-R Evita, Evienne, Etienne at 3 yrs old

After waiting several years for does from 'Drea, when she had triplet does in 2014, we kept all three! Watching this trio mature was one of the greatest joys I've had in dairy goats. It is difficult to realize that they are all gone now, living on in their progeny. They all had extremely correct udders, with high and smoothly blended rear udders, correct teats, and beautiful foreudders. They excelled in structural correctness and dairy strength with nice blend of Elenya's levelness and style with 'Drea's strength and power. Imagine a trio of first fresheners which all scored E in both general appearance and mammary, then all scored FS92 EEEE as 5 yr olds with records over 3700 lbs milk and over 100 lbs protein! And they all finished with over 20,000 of milk lifetime, with over 10/lbs/day lifetime average! Fun fact- Over the a 5 year period, Etienne was a member of 16 National Show group classes, with 13 firsts and 3 seconds.

ss-+\*B des Ruhigestelle Eins  
s- +\*B des Ruhigestelle Prince Edward

7 GCH daughters

'17, '18, '19, '21 ADGA National Show 1<sup>st</sup> place Sr Get

'18 ADGA National Show Premier Sire

sd- SGCH des Ruhigestelle Elenya 10\*M

5-4 FS93 EEEE 6-4 FS93 EEEE

6-11 305 4071 121 3.0% 106 2.6%

lifetime to date- 2699 30868 992 3.2% 864 2.8%

'17 ADGA NATIONAL CHAMPION

& RESERVE BEST UDDER SAANEN

3 GCH daughters

ds-\*B des Ruhigestelle Carlos  
d- SGCH des Ruhigestelle Nashville 7\*M

3-1 FS92 EEEE, 5-3 FS91 VEEE, 6-3 FS92 EEEE

2-10 305 4368 157 3.6% 128 2.9% '07 Top Ten

d- SGCH des Ruhigestelle Elendrea 9\*M

3-5 FS93 EEEE

2-00 305 3950 138 3.5% 123 3.1% \*\* '09 Top Ten

3-00 305 4110 126 3.1% 122 3.0% \*\* '10 Top Ten

dd-SGCH des Ruhigestelle Elendili 8\*M

6-5 FS92 EEEE 3-00 302 4005 151 3.8% 118 2.9% '07 Top Ten

Lifetime 1787 20024 704 3.6% 591 3.0%

'09 ADGA National Show 2<sup>nd</sup> place 5-6 yr old

Dam of 1<sup>st</sup> place Produce of dam, both '08 & '09

1<sup>st</sup> place Dam & Daughter (w/ Elende), both '08 & '09

High 305 day Milk & Fat Awards '09

Winner- Total Performer Award '09



### **SGCH TEMPO PASSA ETIENNE 10\*M** (deceased)

2-4 FS89 EEEE, **3-4 FS92 EEEE,**  
**4-5 FS92 EEEE, 5-6 FS92 EEEE, 7-4 FS92 EEEE**  
 1-11 305 2941 103 3.5% 88 3.0% ext 324 3093 109 93  
 2-10 305 3880 132 3.4% 116 3.0% ext 341 4199 143 126  
 4-00 305 3990 125 3.1% 113 2.8% ext 351 4314 136 124  
 5-00 305 3976 131 3.3% 115 2.9% ext 376 4521 148 132  
 6-02 260 2873 82 3.0% 74 2.6% (bred back early)  
 7-00 283 2711 87 3.2% 73 2.7%  
 8-00 305 4067 130 3.2% 108 2.7%  
 Lifetime to date 3284 27376 887 3.3% 774 2.9%  
 3xGCH, 2xRSGCH, 3xBOB, 2xBIS, 1XBUIS,  
 '21 NSBA Res All American Aged Doe  
**'17 1<sup>st</sup>/1<sup>st</sup> udder 3 yr old ADGA Nat'ls,**  
**'18 5<sup>th</sup> place 4 yr old ADGA Nat'ls**  
**'19 2<sup>nd</sup>/2<sup>nd</sup> udder 5-6 yr old ADGA Nat'ls**  
**'21 1<sup>st</sup>/1<sup>st</sup> udder 7+ yr old ADGA Nat'ls,**



### **GCH TEMPO PASSA EVIENNE 10\*M** (deceased)

2-4 FS88 EVVE, **3-4 FS91 EEEE,**  
**4-5 FS91 EEEE, 5-6 FS92 EEEE, 7-4 FS91 EEEE**  
 1-06 305 2843 76 2.7% 81 2.9% ext 469 4048 105 118  
 2-11 305 3684 96 2.6% 105 2.9% ext 318 3782 99 108  
 4-00 305 3862 106 2.7% 107 2.8% ext 323 4014 109 112  
 5-00 305 4063 110 2.7% 110 2.7% ext 313 4134 112 112  
 6-00 305 3580 94 2.6% 95 2.7% ext 335 3810 101 102  
 7-01 305 3370 95 2.7% 9278 2.6% ext 454 4907 136 135  
 Lifetime to date 2267 25064 672 2.7% 698 2.8%

3xGCH, 1xRSGCH, '21 NSBA American Aged doe  
**'17 6<sup>th</sup> place 3 yr old ADGA Nat'ls**  
**'19 5<sup>th</sup> place 5-6 yr old ADGA Nat'ls**  
**'21 2<sup>nd</sup>/2<sup>nd</sup> udder 7+ yr old ADGA Nat'ls**



### **GCH TEMPO PASSA EVITA 10\*M** (retired)

2-4 FS89 EEVE, **3-4 FS91 VEEE,**  
**4-5 FS92 EEEE, 5-6 FS92 EEEE**  
 1-08 305 2657 73 2.7% 77 2.9% ext 398 3320 92 99  
 2-10 305 3682 103 2.8% 103 2.8% ext 331 3917 109 110  
 3-11 305 3766 113 3.0% 106 2.8% ext 380 4282 128 123  
 5-00 305 3209 90 2.8% 88 2.8% ext 321 3339 94 91  
 5-11 305 2903 76 2.6% 74 2.5% ext 315 2965 78 76  
 6-11 209 1920 57 2.9% 48 2.5%  
 Lifetime to date 2065 21140 604 2.8% 587 2.8%

3xGCH, 1xRSGCH,  
**'17 13<sup>th</sup> place 3 yr old ADGA Nat'ls**  
**'18 7<sup>th</sup> place 4 yr old ADGA Nat'ls**



## SGCH TEMPO PASSA ELENTERA 11\*M (deceased, reference only)

born 4/15 American ID575



3 yrs



4 yrs

2-2 FS89 VEEV (FF), **3-2 FS92 EEEE, 6-2 FS92 EEEE**

1-09 305 3589 114 3.2% 108 3.0%

ext 336 3873 127 119

2-11 305 4277 138 3.2% 129 3.0%

ext 363 4808 157 148

3-11 305 4165 129 3.1% 121 2.9%

ext 309 4202 131 122

4-11 305 3703 118 3.2% 100 2.7%

5-10 281 3690 121 3.3% 96 2.6%

Lifetime 1656 20723 672 3.2% 601 2.9%

'16 (dry yearling) 1xGCH, 1xRSGCH

'17 2xGCH, **2<sup>nd</sup> place 2 yr old ADGA Nationals**

'18 5xBOB, 4xBIS, GCH/BOB D7 Saanen Specialty

**'18 ADGA RESERVE NATIONAL CHAMPION**

'18 Washington State Fair 1<sup>st</sup>/1<sup>st</sup> udder 3 yr old,  
RSGCH, RBUOB (to Elixer)

**'19 ADGA RESERVE NATIONAL CHAMPION  
& Reserve Best Udder**

'21 4xBOB, 1xBIS

Tera is the classic ugly duckling turned swan. She had so many 'stages' growing up that we eventually just ignored her and let her grow. As a first freshening 2 yr old, she was still just average as she started, but slowly came into production in the first couple months, and developed a very nice udder milking 13-14 lbs. Long and level (but no body...), she easily finished her GCH in her first two rings, followed by a surprise 2<sup>nd</sup> at Nationals. Yet she milked over 3,500 lbs as a first freshener. Another freshening and she became strikingly tall, long and level with plenty of body depth, and a beautiful capacious udder milking 17 lbs a day. She is a sweetheart to handle, and travels well, so she had a good trip to Ohio where she was named Reserve Nat'l Champion in a close placing! Despite traveling over 7,000 miles that year, Tera still milked almost 4,300 lbs!! Fully mature, she repeated her win at the '19 Nationals. Tera was a big girl with a big heart and generous personality. She is horribly missed, please do not ask about her.

ss-\*B des Ruhigestelle Carlos

s-SG+\*B des Ruhigestelle Elander Elite Sire

sd- SGCH des Ruhigestelle Elendili 8\*M Elite Doe

LA 4-5 FS90 EEEE, 5-5 FS91 VEEE, **6-5 FS92 EEEE**

**3-00 302 4005 151 3.8% 118 2.9% '07 Top Ten**

Lifetime **1876 21195 743 3.5% 623 3.0%**

**'08 ADGA National Show 3<sup>rd</sup> place 4 yr old**

**'09 ADGA National Show 2<sup>nd</sup> place 5-6 yr old**

Dam of 1<sup>st</sup> place Produce of dam, both '08 & '09

1<sup>st</sup> place Dam & Daughter (w/ Elende), both '80 & '09

High 305 day Milk & Fat Awards '09

**Winner- Total Performer Award '09 Nationals**

ds-SG+\*B Vineyard View Tiber

d-SGCH des Ruhigestelle Eigeria 10\*M

**3-5 FS92 EEEE**

2-03 305 3206 103 3.2% 95 3.0%

'14 Oregon State Fair, WA State Fair &

D7 Saanen Specialty 1<sup>st</sup>/1<sup>st</sup> udder yearling

'15 2xGCH, 6xRSGCH, 3xBUOB,

GCH/BUOB Oregon State Fair, RGCH/BUOB WA State Fair

**dd-SGCH des Ruhigestelle Elende 9\*M**

**8-2 FS92 EEEE**

1-11 305 3657 112 3.1% 112 3.1%

**5-00 305 4132 127 3.1% 113 2.7% '11 Top Ten**

**'08 ADGA Nationals 1<sup>st</sup>/1<sup>st</sup> udder 2 yr old**



## **SGCH TEMPO PASSA ELENICE 12\*M** (deceased, reference only)

born 3/16 American ID648



Age 3 yr



Age 4 yr

### **2-4 FS91 EEEE, 3-5 FS93 EEEE, 5-2 FS92 EEEE**

1-05 305 3310 104 3.1% 92 2.8%

ext 469 5087 157 142

2-10 305 4226 134 3.2% 107 2.5%

3-10 305 4047 127 3.1% 100 2.5%

ext 329 4285 134 106

4-10 274 2837 90 3.1% 73 2.6% (bred back early)

5-08 305 3861 118 3.1% 100 2.7% ext 377 4528 140 117

Lifetime 1892 22132 691 3.1% 575 2.6%

'18 1xGCH, 2xRSGCH, 5x1st

'18 1<sup>st</sup> 2 yr old D7 Saanen Specialty

**'18 4<sup>th</sup>/3<sup>rd</sup> udder 2 yr old ADGA Nationals**

'19 3xGCH, 1xBIS GCH D7 Saanen Specialty

**'19 ADGA Nationals 5<sup>th</sup> place 3 yr old**

'19 Washington State Fair 1<sup>st</sup>/1<sup>st</sup> udder 3 yr old,  
GCH (BOB), BUOB

FS93 and 4200 lbs milk! Ice is powerful like her dam, but sharper and more open. Ice has a wide and level rump that supports a capacious udder with a large area of attachment. As a fall freshening yearling, she milked a steady 10 lbs and handily milked well over 3,000 lbs, then continued on an extended lactation. Ice has matured into one of our best, easily finishing her GCH at the '19 Saanen Specialty. Ice's daughters Eloni and Emphasis are following in their dam's footsteps with 3,000 lb yearling lactations. Eloni was then Res. All American 2 yr old while on a milk through lactation. Like her dam, Emphasis scored FS39 as a 3 yr old. We have a maternal sister to Ice via ET, Enable. Like Ice, she has come into her own as a 3 yr old, winning 3xBIS and scoring FS93 in the same weekend! Losing Ice after a brief illness this year has taken a huge emotional toll on everyone here at the farm.

### ss-SG++\*B Heavenly "Poor" Frm Prime Rate

11 GCH progeny

### s- SG+\*B des Ruhigestelle High Yield

sd-SGCH des Ruhigestelle Sun Marquessa 9\*M

6-02 91 EEEE

2-09 305 4000 3.2 128 2.8 113

Lifetime 2203 24820 3.1 766 2.8 698

### s- ++\*B des Ruhigestelle Eosef

4 GCH daughters

### d-SGCH des Ruhigestelle Eleni 11\*M

**3-3 FS93 EEEE, 4-3 FS92 EEEE, 5-4 FS92 VEEE**

2-11 305 3598 118 3.3% 110 3.0%

3-11 305 3517 121 3.4% 106 3.0%

4xGCH, 4xBOB, 2xBDIS

'16 OR & WA State Fair BOB/BUOB

### dd- SGCH des Ruhigestelle Elenya 10\*M

**5-4 FS93 EEEE 6-4 FS93 EEEE** 4 GCH daughters

6-11 305 4071 121 3.0% 106 2.6%

**lifetime to date- 3108 35807 1151 3.2% 1003 2.8%**

**'17 ADGA NATIONAL CHAMPION**

**& RESERVE BEST UDDER SAANEN**

## 2013 ADGA National Show Group classes-



1<sup>st</sup> Place Breeder's Trio –L-R Catcher, Elende, River



1<sup>st</sup> Place Dairy herd –L-R Catcher, Elende, River, Elenwe (all 1<sup>st</sup> place does!)





1<sup>st</sup> place Dam & Daughter – Elende (back, right) Elenya (front, left)



1<sup>st</sup> place Produce of Dam – Winseeker daughters, River (back, left) Catcher (front, right)





2<sup>nd</sup> place Produce of Dam- Elende daughters, Elenya (L) Elixer (R)



**2012 WA State Fair Sr Champion lineup-** L-R WinSeeker (Riah in 2<sup>nd</sup> ), Elenwe, Elenya, WinClimber, WinRiver GCH -WinSeeker, RSGCH-Elenwe Thanks to all the handlers and to Mark Baden for taking this incredible photo!



# In the beginning...



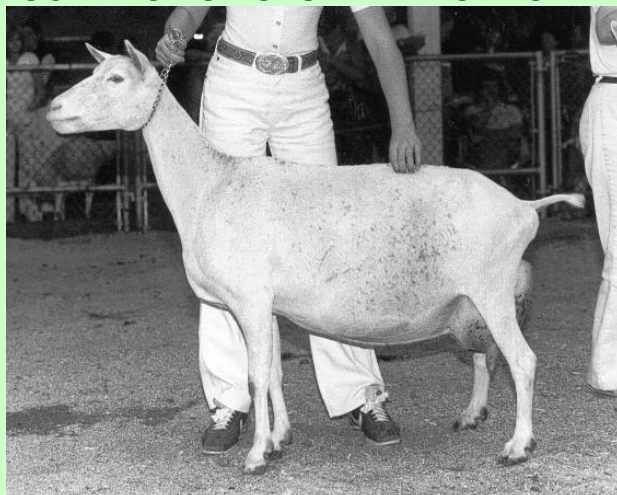
**GCH DES RUHIGESTELLE CONJUREO**



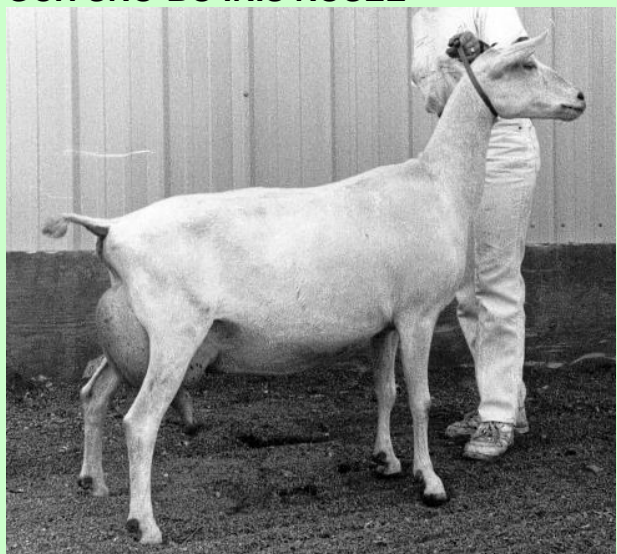
**FERN AND DES RUHIGESTELLE EDEN**



**GCH DES RUHIGESTELLE PUPPIS**



**GCH SNO-BO IRIS ROSEE**



**GCH NU-TOG-A-SAAN LEAH ANNE**





**GCH DES RUHIGESTELLE WINNER**



**GCH DES RUHIGESTELLE ETA**



**GCH DES RUHIGESTELLE VISA GOLD**



**GCH DES RUHIGESTELLE EQUIPOISE**



**GCH DES RUHIGESTELLE OLYMPIC GOLD**



**GCH DES RUHIGESTELLE EQUUS**





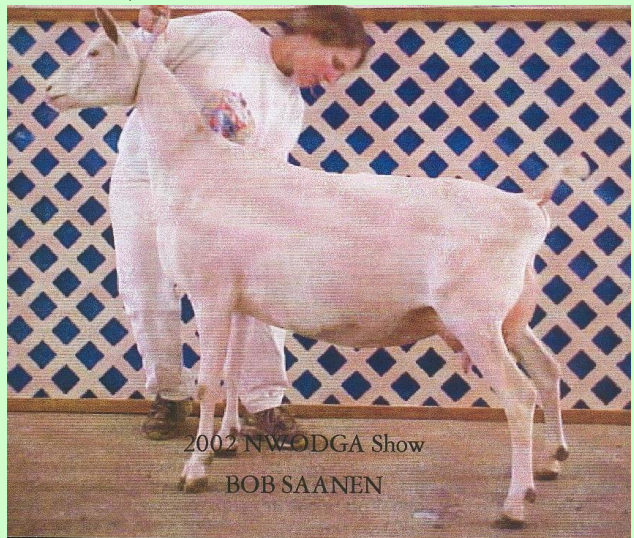
**GCH DES RUHIGESTELLE EQUUS**



**GCH SQUAW MOUNTAIN SUNGLOW**



**GCH DES RUHIGESTELLE ELEME**



**DES RUHIGESTELLE SUNSET**



**GCH DES RUHIGESTELLE SUN PRINCESS**

## ALPINE DOES

### **SGCH TEMPO AQUILA FREELY IMAGINED 5\*M**

born 5/03 American chamoisee ID 379 TPS 110



LA 2-0 FS89 VEVV (first freshener)  
3-0 FS87 +V+V  
4-0 **FS92 EEEE**  
5-2 **FS92 EEEE**  
**8-1 FS92 EEEE**

1-09 303 3013 101 3.4% 84 2.8%  
2-09 305 3503 115 3.3% 98 2.8%  
**3-09 305 4066 141 3.5% 116 2.9%**  
4-09 305 3496 113 3.2% 100 2.9%  
6-09 304 3042 101 3.3% 82 2.7%  
7-08 305 2871 95 3.3% 81 2.8%  
Lifetime to date  
**1890 20516 685 3.3% 577 2.8%**

Our little "Smidge" has not only grown up, she has surpassed all our expectations! She is very correct in general appearance, with a beautiful head. Her udder is very capacious, with a high wide rear and well extended fore and side udder. At three she was criticized for being frail. The next year she scored FS92, and milked over 4,000 lbs while on a rigorous show circuit that included 5 states and nearly 8,000 miles! At 8 years old, she had milked over 20,000 lbs and was named RSGCH at the Oregon State Fair. She's the twin to SGCH ++\*B TA Freelance, owned by Redwood Hills, one of the most influential current Alpine sires, and the 2009 ADGA National Show Premier Sire!

- '05 10<sup>th</sup> place 2 yr old-ADGA Nationals, 6<sup>th</sup> place 2 yr old-Sonoma Co Fair
- '06 3x1<sup>st</sup>, 2x RSGCH, 6<sup>th</sup> place 3 yr old-ADGA Nationals, 6<sup>th</sup> place 3 yr old-Sonoma Co Fair  
2<sup>nd</sup> 3 yr old & RSGCH- Western WA Fair
- '07 3xGCH, 2xBOB, 2xBIS, 2xBUIS, 2<sup>nd</sup>/2<sup>nd</sup> udder Sonoma Co Fair, 2<sup>nd</sup>/2<sup>nd</sup> udder California State Fair  
**3<sup>rd</sup>/3<sup>rd</sup> udder 4 yr old ADGA Nationals**, member 1<sup>st</sup> Sr Get, 2<sup>nd</sup> Breeders Trio and Dairy Herd  
1<sup>st</sup> 4 yr old & GCH- Western WA Fair, member Best Dairy Herd in Show & 1<sup>st</sup> Sr Get
- '08 **ADGA National Show 1<sup>st</sup>/1<sup>st</sup> 5-6 yr old, Member 1<sup>st</sup> place Breeder's Trio, 1<sup>st</sup> place Dairy Herd, 1<sup>st</sup> place Senior Get, and 1<sup>st</sup> place Produce of Dam. Winner high 305 lactation milk**
- '08 1<sup>st</sup> aged doe & GCH- Western WA Fair, member Best Dairy Herd in Show & 1<sup>st</sup> Sr Get
- '11 Oregon State Fair RSGCH and member Supreme Best Three, Western WA Fair 2<sup>nd</sup> aged doe
- '13 Oregon State Fair Total Performer and High Lifetime Lactation Awards

[ss-SGCH ++\\*B Cherry Glen TRI Alice Alladin](#)

5-3 FS91 EEE

[s-SGCH++\\*B Milar Farm Royal Image](#)

2000 Spotlight Sale Buck

LA 6-2 FS90 EEE

4 daughters FS92-94 EEEE

1<sup>st</sup> Sr Get of Sire- 2007 & 2008 Nat'l Show

[sd-SGCH Exemplr Royal Ferina \\*M](#)

LA 8-3 FS 92 EEEE

3-11 305 3340 114 3.4% 86 2.6%

5-00 305 3330 114 3.4% 88 2.6%

[ds-++B Missdee's Barracuda](#)

multiple GCH daughters

[d-GCH des Ruhigestelle Free Thinker 4\\*M](#)

9-4 **FS 92 EEEE**

7-00 305 3007 110 3.7% 81 2.7%

'95 Nat'l 3rd place milking yrlg

'98 Nat'l 3rd place 4yr old, Oregon State Fair BIS

'99 Nat'l 1st place 5yr old, 1st udder

**3 GCH/FS90 daughters**

**Dam of SG+\*B Tempo Aquila Freelance**

[dd-SG des Ruhigestelle Free Time 3\\*M](#)



## SGCH TEMPO AQUILA TETRAZZINI 4\*M

born 04/04 American sundgau ID 474 TPS 103



Tetra age three years (above) and 9 years (right)

LA 1-2 FS89 VE+E 4-4 **FS93 EEEE**  
 2-2 FS88 VE+E 5-4 **FS92 EEEE**  
 3-2 **FS92 EEEE** 6-4 **FS93 EEEE**  
**7-3 FS94 EEEE**

4xGCH, 21xBOB, 7xBUOB, 11xBIS

1-10 224 2775 94 3.4% 78 2.8%  
 2-10 305 3496 125 3.6% 98 2.8%  
 3-11 259 2696 98 3.6% 77 2.9%  
 5-00 293 3068 106 3.4% 88 2.9%  
 5-10 304 2503 84 3.4% 70 2.8%  
 6-10 290 2581 96 3.7% 78 3.0%  
 lifetime to date-  
**2058 20200 704 3.5% 576 2.9%**

### **2013 NATIONAL CHAMPION, BEST UDDER, HIGH LIFETIME MILK & FAT, 1<sup>st</sup> DAM & DAUGHTER!**

Tetra is the kind of doe that gets what she sets her mind on. The only thing missing on her resume was a National title, and she wanted it. Though we thought she wouldn't breed again, she surprised us with twin does in June, then looked her best in St. Paul!!! At nine years old, her style, correctness and and mammary put her in a class separate from the rest. Tetra has at least six CH daughters, including our SGCH TA Ricciolini and SGCH TA Rotini, now FS93 EEEE. Tetra was officially retired in the showing after her third BIS at the Washington State Fair, with more than a few damp eyes in the audience. After an incredible career, she is now retired and lives happily with Smidge.

'08 3xBOB, 3xBIS, 1<sup>st</sup> 4 yr old & RSGCH- Western WA Fair, member Best Dairy Herd in Show & 1<sup>st</sup> Sr Get

'08 ADGA National Show 5<sup>th</sup> place 4 yr old, Member 1<sup>st</sup> place Dairy Herd and 1<sup>st</sup> Place Senior Get

'09 2xBOB/BUOB, 2xBIS - BIS-Western WA State Fair

'09 ADGA National Show 3<sup>rd</sup> place 5-6 yr old, member 2<sup>nd</sup> place Breeder's Trio

'10 District 7 Alpine Specialty BOB, 4xBOB, 3xBUOB, 1xBIS

'11 REDGA 4xBOB, 1xBIS; OR State Fair BOB/BIS, member Supreme Best Three; Western WA State Fair BOB/BIS

'13 Oregon State Fair Supreme Champion- BOB, BIS, BUIS, Washington State Fair Supreme Champion- BOB, BIS

ss-SGCH ++\*B Cherry Glen TRI Alice Alladin

5-3 FS91 EEE

s-SGCH++\*B Milar Farm Royal Image

2000 Spotlight Sale Buck,

LA 6-2 FS90 EEE, 4 daughters FS92-94 EEEE

1<sup>st</sup> Sr Get of Sire- 2007 & 2008 Nat'l Show

sd-SGCH Exemplr Royal Ferina \*M

LA 8-3 FS 92 EEEE

3-11 305 3340 114 3.4% 86 2.6%

ds-GCH++\*B Tempo Aquila Free Radical

sire of 2006 Nat'l Champion

GCH Cherry Glen Radical Gesture

d-SGCH Tempo White Macaroon 3\*M

6-3 FS93 EEEE 4xGCH 1xBOB 3xRSGCH

1-11 305 3041 106 3.5% 87 2.9%

dd-White Haven Jujube 2\*M

5-2 FS89 VEVE

4-08 263 3060 108 3.5% 81 2.6%



## SGCH TEMPO AQUILA TOKAY 5\*M

born 4/04 American chamoisee ID 480 TPS 110



LA 1-2 FS88 VV+V

2-2 FS89 VE+E

3-2 **FS92 EEEE**

4-4 **FS93 EEEE**

1-00 237 1743 65 3.7% 49 2.8%

1-11 305 3242 109 3.4% 91 2.8%

2-10 305 3788 131 3.5% 107 2.8%

3-10 279 3461 118 3.4% 100 2.9%

Lifetime to date

1280 13540 468 3.5% 384 2.8%

Tokay is an extremely tall, open and dairy individual. Like Tetra, she has a beautiful combination of strength and dairyness. She has a capacious udder, with a high wide rear, well extended fore and correct teat placement. While Seeker worked hard in several close placings to earn her National Championship, Tokay simply got up in the morning and decided she was going to win herself a championship that day. I happened to be sleeping next to the pen, so she reached through the bars and tugged on my sleeping bag as if to say "Come on, let's go." She showed herself, and never put a foot wrong all day. (She was kind enough to let me come along...) Watching her in the field, I still marvel that such an awkward kid could develop into a magnificent doe like Tokay. If I never breed a better doe than her, I will have done well enough.

'05 5x1st, **1<sup>st</sup> /2<sup>nd</sup> udder milking yearling-ADGA National Show**, 1<sup>st</sup> /1<sup>st</sup> udder-Sonoma Co Fair

member 1<sup>st</sup> Dam & Daughter w/ Praline at Nationals

'06 4x1st, 3x2nd, 1xGCH & BOB, **2<sup>nd</sup>/1<sup>st</sup> udder 2 yr old ADGA National Show**, 1<sup>st</sup> 2 yr old Western WA Fair

'07 2xGCH & BIS, **1<sup>st</sup>/1<sup>st</sup> udder 3 yr old ADGA National Show**, member 1<sup>st</sup> Sr Get, 1<sup>st</sup> Produce, 2<sup>nd</sup> Breeders

Trio and Dairy Herd, 1<sup>st</sup>/1<sup>st</sup> udder 3 yr old California State Fair.

BOB & BIS- Western WA Fair, member Best Dairy Herd in Show & 1<sup>st</sup> Sr Get

'08 2xBOB & BUOB, 1xBIS, '08-BUIS- Western WA Fair, member Best Dairy Herd in Show & 1<sup>st</sup> Sr Get

**'08 ADGA NATIONAL SHOW GRAND CHAMPION ALPINE**

**Member 1<sup>st</sup> place Breeders Trio, 1<sup>st</sup> place Dairy Herd, 1<sup>st</sup> place Senior Get**

ss-SGCH ++\*B Cherry Glen TRI Alice Alladin

**5-3 FS91 EEE**

s-SGCH++\*B Milar Farm Royal Image

2000 Spotlight Sale Buck

**LA 6-2 FS90 EEE**

4 daughters FS92 EEEE

1<sup>st</sup> Sr Get of Sire- 2007 & 2008 Nat'l Show

sd-SGCH Exemplr Royal Ferina \*M

**LA 8-3 FS 92 EEEE**

3-11 305 3340 114 3.4% 86 2.6%

5-00 305 3330 114 3.4% 88 2.6%

ds-SGCH++\*B Shahena'ko Sumo Tierro

d-SGCH Tempo Aquila Praline 4\*M

**2-3 FS92 EEEE 3-4 FS92 EEEE 6-4 FS91 EEEE**

4-01 251 2828 98 3.5% 84 3.0%

8xBOB, 6xBIS

'05 ADGA Nat'l 3<sup>rd</sup> 4 yr old

1<sup>st</sup> Dam & Daughter w/ Tokay

dd-SGCH Tempo White Macaroon 3\*M

**3-2 FS92 EEEE 6-3 FS93 EEEE**

4xGCH 1xBOB 3xRSGCH

1-11 305 3041 106 3.5% 87 2.9%

'03 ADGA Nat'l 4<sup>th</sup> 4 yr old

1<sup>st</sup> Dam & Daughter w/ Praline

## GCH TEMPO AQUILA FINALLY FREE 5\*M (deceased)

born 2/05 American chamoisee ID 562 TPS 96



Finally, age 4

LA 2-3 FS88 VVVE **5-5 FS92 EEEE**  
 3-5 FS89 EVVV 6-4 **FS91 EEVE**  
 4-5 **FS90 VEVE** 7-5 **FS91 EEEE**  
 2-00 281 2508 86 3.4% 68 2.7%  
 3-00 278 2447 89 3.5% 71 2.8%  
**4-00 293 3106 102 3.3% 84 2.7%**  
 4-11 305 2676 89 3.3% 72 2.7%  
 5-11 298 2846 93 3.3% 77 2.7%  
 7-01 183 1909 56 2.9% 48 2.5%  
 Lifetime to date 1793 17437 577 3.4% 473 2.7%



Finally, age 7

'07 2x2nd, 1x RSGCH  
 10<sup>th</sup> place 2 yr old ADGA National Show  
 '08 5xGCH & BOB, BUOB, 3xBIS, 7x1st  
**'08 ADGA National Show 3<sup>rd</sup> place 3 yr old**  
**Member 1<sup>st</sup> place Breeder's Trio,**  
**1<sup>st</sup> place Dairy Herd and 1<sup>st</sup> place Produce**  
**'09 ADGA National Show 6<sup>th</sup> place 4 yr old**  
**Member 2<sup>nd</sup> place Breeder's Trio**  
**'12 Oregon State Fair GCH & BOB**

Finally is a lovely long and level doe with a great temperament. Her biggest problem is that as a young doe, she was overshadowed by Tokay and Tetra, now as an older doe, she is again in the shadow of Living Free. Still, she is a beautiful doe in her own right, and has defeated many other champions while standing just behind our best. Finally is a maternal sister to Smidge (Imagined) and Freelance. She has two older full sisters that have finished their GCH for other owners. We kept her, as she is the most like her dam of the three. Finally has a super level topline, clean front end, and well attached mammary with an especially high rear udder. She looked her best ever the last couple years, with some long overdue maturity and body depth. Her daughters are showing her same style, and Finally has retired to brood doe status. Her daughter, Care Free, scored 1-4 FS 86 VVVV at only 3 weeks fresh (owned by Mark Johnson). Finally's '12 doe kid 'Pretty' was named BIS at the WA State Fair. Daughters of her son, FreePort, (owned by Redwood Hills) are doing well also, with 2 yr old Plainly Free 3x1st, 1xRSGCH, and yearling Reba GCH & BJDIS at her first show.

ss-+\*B Redwood Hills Yreka Solar

s-SG+\*B Redwood Hills Vavra

3 GCH daughters

sd-GCH Redwood Hills Sequoia Zara \*M

**7-04 FS90 VEEE**

2-11 305 3080 95 3.1% 81 2.6%

ds-++\*B Missdee's Barracuda multiple GCH daughters

d-GCH des Ruhigestelle Free Thinker 4\*M

**9-4 FS 92 EEEE**

7-00 305 3007 110 3.7% 81 2.7%

'95 Nat'l 3rd place milking yrlg

'98 Nat'l 3rd place 4yr old, Oregon State Fair BIS

'99 Nat'l 1st place 5yr old, 1st udder

**3 GCH/FS90-92 daughters**

**Dam of SG+\*B Tempo Aquila Freelance**

dd-SG des Ruhigestelle Free Time 3\*M

## SGCH TEMPO AQUILA RICCIOLINI 5\*M (deceased)

born 2/07 American sundgau ID 735



Ricciolini- (3 yrs)

LA 2-5 FS89 EEEV (FF), 3-5 **FS91 EEEE**

**5-5 FS91 EEEE** 6-4 **FS90 VEEV**

**7-4 FS91 EEEE**

1-11 288 2775 86 3.1% 74 2.7%

2-11 305 3339 100 3.0% 86 2.6%

**3-11 300 4005 113 2.8% 100 2.5%**

5-00 236 3052 84 2.8% 75 2.5%

5-10 295 3895 109 2.8% 97 2.4%

**Lifetime to date 1656 20020 581 2.9% 510 2.6%**

'10 3xGCH, 2xBIS, RSGCH D7 Alpine Specialty

Dam of SGCH TA RosaMarina 6\*M FS92 EEEE

Ricci and Rotini (Frosty) are two of Tetra's triplet does from '07. Frosty was the high selling doe in the '07 Colorama Sale, purchased by Gena Herzinger, and just returned to us in 2012. They are so similar that I often have to do double takes to be sure I have the right one. Both are extremely dairy, with level topline and strong general appearance. They have inherited all the elegance and style from both Tetra and Jambalaya. Both have big capacious udders with high wide rear udders. Ricci has more desirable teats, Frosty has a little more foreudder. Both are milking really well, with tests over 18 lbs, and each has a 4,000 lb record. Frosty has stronger rear legs, Ricci is deeper. We love the pair, and would like to thank Gena for allowing us to bring Frosty home. It was a 'goat moment' when we introduced Frosty to the herd after being gone for 5 years. She walked in, touched noses with Ricci, and calmly walked up to the manger as if she had only been gone to a weekend show.

On a very sad day this year we lost Ricci to a drug reaction. She looked the best she had ever looked.

### ss-++\*B Q'appelle V Ember

sire of 2009 National & Res National Champions

s- SG+\*B Redwood Hills Jaeger *Elite Sire*

8 GCH daughters

sd-SGCH Redwood Hills RememberJambalaya 4\*M

**2005 & 2007 National Champion**

**3-06 FS92 EEEE 5-03 FS92 VEEE**

2-09 305 3570 106 97

4-00 305 3380 109 3.2% 99 2.9%

### ds-SGCH++\*B Milar Farm Royal Image

2000 Spotlight Sale Buck

LA 6-2 FS90 EEE, 4 daughters FS92-93 EEEE

1<sup>st</sup> Sr Get of Sire- 2007 & 2008 Nat'l Show

d-SGCH Tempo Aquila Tetrzzini 4\*M

**7-4 FS94 EEEE 2013 National Champion & Best Udder**

**3-2 FS 92 EEEE, 4-5 FS93 EEEE, 5-5 FS92 EEEE, 6-5 FS93 EEEE**

2-10 305 3496 125 3.6% 98 2.8%

dd-SGCH Tempo White Macaroon 3\*M

**6-3 FS93 EEEE** 4xGCH 1xBOB 3xRSGCH

1-11 305 3041 106 3.5% 87 2.9%



## SGCH TEMPO AQUILA ROTINI 5\*M (deceased, reference only)

born 2/07 American sundgau ID 736



Rotini- (5 yrs)

LA 4-4 **FS92 EEEE** 5-5 **FS90 EEEE**  
**6-4 FS93 EEEE** 7-4 **FS92 EEEE**  
**8-4 FS93 EEEE** 10-4 **FS91 EEEE**

3-00 267 2460 76 3.1% 67 2.7% (made elsewhere)

**5-00 305 4076 126 3.1% 105 2.6%**

6-02 288 3133 96 3.1% 78 2.5%

7-00 299 3332 97 2.9% 86 2.6%

8-01 305 3407 84 2.5% 86 2.6%

9-01 228 2820 76 2.7% 71 2.5%

10-0 247 3331 87 2.6% 81 2.4%

10-11 246 3065 97 3.2% 87 2.8%

Lifetime to date - 2220 25912 748 2.9% 668 2.6%

'12 3xBOB, 1xBUOB

**2012 ADGA National Show 1<sup>st</sup> place 5-6 yr old**

**'12 WA State Fair BOB (over Living!)**

**'13 2xBOB, ADGA National Show 3<sup>rd</sup> place 5-6 yr old**

1<sup>st</sup> dam & daughter with Tetra, **High Production**

**Awards for individual lactations, both milk & fat**

'14 1<sup>st</sup> /1<sup>st</sup> udder 7+, OR State Fair, D7 Alpine Specialty

'15 OR State Fair GCH, BOB

Rotini, aka Frosty, is our last of Tetra's '07 triplet does. Sold as a kid in the Colorama Sale, we were pleased to have her back as a 5 year old. Frosty wrote the book on dairy strength, with tremendous angularity, openess and depth. At 10 years old she freshened easily with triplets, and still carried a well attached udder with continued high production and a high test of 18.4 lbs! She has now milked over 20,000 lbs **after** she turned five years old! Her rear udder is still as high and wide as ever. She carries all the elegance and style from both Tetra and Jambalaya and is extremely dairy with a level topline and strong general appearance. She and her sister Ricci were high production dairy does with high scores and high milk records to go with them. Both had tests over 18 lbs, and each has a 4,000 lb record. Also, each has multiple GCH daughters scoring FS90-93, and milking 3500-4000 lbs. Sadly, we lost Ricci in '05 to a sudden drug reaction, but were able to retain her last doe kid, Mazzei. Frosty is now retired, but not before making a solid impact on our herd, as well as others.

### ss-++\*B Q'appelle V Ember

sire of 2009 National & Res National Champions

s- SG+\*B Redwood Hills Jaeger *Elite Sire*

8 GCH daughters

sd-SGCH Redwood Hills RememberJambalaya 4\*M

**2005 & 2007 National Champion**

**3-06 FS92 EEEE 5-03 FS92 VEEE**

2-09 305 3570 106 97

4-00 305 3380 109 3.2% 99 2.9%

### ds-SGCH++\*B Milar Farm Royal Image

2000 Spotlight Sale Buck

LA 6-2 FS90 EEE, 4 daughters FS92-93 EEEE

1<sup>st</sup> Sr Get of Sire- 2007 & 2008 Nat'l Show

d-SGCH Tempo Aquila Tetrzzini 4\*M

**7-4 FS94 EEEE 2013 National Champion & Best Udder**

**3-2 FS 92 EEEE, 4-5 FS93 EEEE, 5-5 FS92 EEEE, 6-5 FS93 EEEE**

2-10 305 3496 125 3.6% 98 2.8%

dd-SGCH Tempo White Macaroon 3\*M

**6-3 FS93 EEEE** 4xGCH 1xBOB 3xRSGCH

1-11 305 3041 106 3.5% 87 2.9%

**SGCH TEMPO AQUILA LIVING FREE \*M (deceased, reference only)**

born 2/09 American Chamoisee ID 931



Living Free, 3 yrs



Living Free, 6 yrs

**2015 ADGA National Champion and Best Udder Alpine, Now FS95!!!**

LA 1-5 FS89 VEVV 2-4 FS92 EEEE

3-5 FS93 EEEE 5-4 FS93 EEEE 6-4 FS95 EEEE

1-02 250 2210 66 3.0% 58 2.6%  
2-01 305 3668 113 3.1% 98 2.7% ext 312 3736 115 100  
3-01 305 3885 109 2.8% 99 2.6% ext 313 3965 111 101  
4-02 305 3471 93 2.7% 86 2.5% ext 327 3639 98 91  
5-02 301 3463 96 2.7% 87 2.5%  
6-02 305 3645 98 2.7% 93 2.6% ext 565 4116 111 107

**Lifetime 1991 22645 643 2.8% 588 2.6%**

'10 1<sup>st</sup> milking yearling District 7 Alpine Specialty

'11 7x1<sup>st</sup>, 3xGCH, 2xRSGCH, 2xBUOB, 1xBIS, GCH- REDGA, RSGCH-W WA State Fair

'12 1xGCH, 2xBOB, 3xBUOB, 1xBUIS, GCH & BUOB- WA State Fair

**2012 ADGA Reserve National Champion with Reserve Best Udder**

**2013 ADGA National Show 1<sup>st</sup>/1<sup>st</sup> udder 4 yr old, ALPINE TOTAL PERFORMER AWARD**

'13 Washington State Fair GCH & BOB

'14 4xBIS, undefeated

'14 Oregon State Fair, District VII Alpine Specialty, GCH, BOB, BIS

'14 Washington State Fair GCH, BOB, BUOB, BIS

'15 Washington State Fair RSGCH, BUOB, BUIS

**(and over 20,000 lbs milk!)**

Living is truly breathtaking. Her foreudder and area of udder attachment are so dramatic that many people miss her incredibly correct general appearance, from her front end assembly right down to her feet. She milks as well as she shows, with a nice steady lactation into winter. And, with two Ex/GCH daughters, including the 1<sup>st</sup> place 3 yr old and 1<sup>st</sup> place Dam & Daughter at Nationals, she can reproduce herself as well, though we would like more daughters!

ss-++\*B SG Redwood Hills Journey Fortune

Many SGCH & EX daughters

s- SG\*B Tempo Aquila Yukon Jack Elite Sire

2013 National Show Premeir Sire

sd-SGCH Tempo Aquila Tokay 5\*M

**2008 NATIONAL CHAMPION**

**3-2 FS93 EEEE 2-10 305 3788 131 3.5% 107 2.8%**

ds- \*B Willow Run Rene`

d- RB Farms Born Free

dd-SG Tempo Aquila Feelin' Free 4\*M

**3-4 FS 92 EEEE**

1-11 305 2876 104 3.6% 91 3.0%



## SGCH TEMPO AQUILA FREE SPINDLE 6\*M (retired, reference only)

born 2/10 American chamoisee ID 050



Spindle 8 yrs old



Spindle 2 yrs (fresh 10 months)



2-5 FS88 VVVE **3-4 FS90 VEEV 4-4 FS90 EEEV 5-4 FS90 VEEE**  
**6-4 FS90 EEEV 7-4 FS91 EEEE 8-5 FS92 EEEE**  
1-05 305 3037 92 3.0% 82 2.7% ext 455 4455 138 3.1% 123 2.8%  
2-10 305 3407 98 2.9% 91 2.7% ext 367 3845 110 2.9% 104 2.7%  
4-00 283 3104 84 2.7% 83 2.7%  
**5-00 305 3814 106 2.8% 101 2.6%** ext 324 3961 111 2.8% 105 2.6%  
6-00 281 3507 101 2.9% 95 2.7%  
7-00 301 3199 92 2.9% 86 2.7% ext 329 3317 95 2.9% 90 2.7%  
8-01 183 1789 54 3.0% 48 2.7% (bred back early)  
8-11 198 2296 71 3.1% 58 2.5%  
**Lifetime to date 2420 26275 764 2.9% 706 2.7%**  
'18 4xGCH

Spindle is a farm favorite. There's just nothing wrong with a doe that can milk over 3,000 lbs and score 90+ every year. Like her dam, Spindle was slow to mature. Born the smallest of quads, she is a moderate sized doe doe at maturity. She is extremely correct and stylish in general appearance, with a correct, well shaped and strongly attached udder. Spindle has lived in the shadow of does like Tetra, Living, and Freehand, so she was never really shown or promoted. She just stayed home and worked. Just for fun, we took her out to a four ring show as an 8 yr old. She handily won GCH in all four, then went back to the pen, trounced on a few does and went back to eating!

### ss-++\*B Q'appelle V Ember

sire of-SGCH Redwood Hills Ember Amicale 8\*M

**2007 Reserve National Champion & Res Udder**

**2009 National Champion & Best Udder**

5-05 FS93 EEEE, 1-6 305 3170 101 93

GCH Shining Moon Sine Qua Non 4\*M

4xGCH Sonoma County Fair, '08 GCH & BIS

**2009 Reserve National Champion & Res BU**

s- SG+\*B Redwood Hills Jaeger Elite Sire

8 GCH daughters

sd-SGCH Redwood Hills RememberJambalaya 4\*M

**2005 & 2007 National Champion**

**3-06 FS92 EEEE 5-03 FS92 VEEE**

2-09 305 3570 106 3.0% 97 2.7%

4-00 305 3380 109 3.2% 99 2.9%

### ds-SGCH++\*B Milar Farm Royal Image

2000 Spotlight Sale Buck, LA 6-2 **FS90 EEE**

4 daughters FS92-94 EEEE

**1<sup>st</sup> Sr Get of Sire- 2007 & 2008 Nat'l Show**

d-SGCH Tempo Aquila Freely Imagined 5\*M

LA 5-2 **FS92 EEEE, twin to SG++\*B Tempo Aquila Freelance**

**3-09 305 4066 141 3.5% 116 2.9%**

'08 ADGA Nat'l 1<sup>st</sup>/1<sup>st</sup> 5-6 yr old

dd-GCH des Ruhigestelle Free Thinker 4\*M

**9-4 FS 92 EEEE** 7-00 305 3007 110 3.7% 81 2.7%

'95 Nat'l 3rd place milking yrlg

'98 Nat'l 3rd place 4yr old, Oregon State Fair BIS

'99 Nat'l 1st place 5yr old, 1st udder

**3 GCH/FS90-92 daughters**

## SGCH TEMPO AQUILA FREE HAND 6\*M (deceased, reference only)

born 2/10 American chamoisee ID139



**3-5 FS91 EEVE** (first freshener milking through)

**4-5 FS93 EEEE 5-5 FS92 EEEE** (stale)

2-05 305 3520 115 3.3% 96 2.7%

ext 567 6324 198 3.2% 73 2.7%

4-02 305 3837 121 3.2% 103 2.7%

ext 581 6631 209 3.1% 179 2.7%

lifetime to date- 1148 12955 407 3.1% 352 2.7%

'14 3xGCH, 2xBOB, 1xBIS, 2xRSGCH (showing stale)

'15 1xGCH & BOB, 2xBOB, 1xBUOB, 1xBIS

'15 ADGA National Show 2<sup>nd</sup> place 4 yr old

'15 Washington State Fair GCH, BIS, over four current National Champions, including Living Free!!!

'16 5xBOB, 5XBIS

Freehand was our best young doe, and perhaps the best Alpine I have bred. She's not just a pretty fluke, but a well bred doe living up to a very impressive pedigree. Her first time out as a milker, judge Dan Laney described her best when he said "I just can't take my eyes off her." Neither can we! Free Hand is a tall, long, beautiful doe that hasn't ever placed lower than 2<sup>nd</sup>, whether showing fresh or on milk through lactations. She has a tremendous frame, and it has taken some time for her to mature. She wasn't at her best at Nationals in '15, but at our last show she came out in full form and won BIS at our most competitive fair, over four current National Champions, including Living! She followed that with 5 more BIS the following spring, while on an extended lactation. We are equally pleased with her production, and level lactation curve. Sadly, Freehand had a bad dystocia in '15 and had not freshened since until '18 when she had a single doe. We were so excited, as she was finally to have her chance, but tragically lost her a month later. Like many great does, her time just never materialized. We are using her son 'Handyman' a lot!

### ss-++\*B SG Redwood Hills Journey Fortune

Many SGCH & EX daughters, *Elite Sire*

s- SG+\*B Tempo Aquila Yukon Jack *Elite Sire*

2013 National Show Premer Sire

sd-SGCH Tempo Aquila Tokay 5\*M

**2008 NATIONAL CHAMPION**

**3-2 FS93 EEEE**

1-11 305 3242 109 3.4% 91 2.8%

2-10 305 3788 131 3.5% 107 2.8%

### ds-SGCH++\*B Milar Farm Royal Image

2000 Spotlight Sale Buck

LA 6-2 **FS90 EEE**

4 daughters FS92-94 EEEE

1<sup>st</sup> Sr Get of Sire- 2007 & 2008 Nat'l Show

d-SGCH Tempo Aquila Freely Imagined 5\*M

LA 5-2 **FS92 EEEE**

**3-09 305 4066 141 3.5% 116 2.9%**

4-09 305 3496 113 3.2% 100 2.9%

'08 ADGA Nat'l 1<sup>st</sup>/1<sup>st</sup> 5-6 yr old

dd-GCH des Ruhigestelle Free Thinker 4\*M

**9-4 FS 92 EEEE**

7-00 305 3007 110 3.7% 81 2.7%

'95 Nat'l 3rd place milking yrlg

'98 Nat'l 3rd place 4yr old, Oregon State Fair BIS

'99 Nat'l 1st place 5yr old, 1st udder

**3 GCH/FS90 daughters**

**Dam of SG++\*B Tempo Aquila Freelance**



## **GCH TEMPO AQUILA JING 5\*M (retired)**

born 6/13 American sundgau ID 380, 381



Jing

2-0 FS88 VVVV, 3-0 FS91 EEEE,  
4-0 FS91 VEEE, 5-2 FS91 VEVE, 5-2 FS92 EEEE

1-07 305 1967 62 3.2% 54 2.7%,

2-08 302 2799 87 3.1% 81 2.9%

3-07 305 3178 104 3.3% 90 2.8%

ext 316 3236 106 3.3% 92 2.8%

4-08 292 2700 90 3.3% 78 2.9%

5-07 305 3203 104 3.2% 89 2.8%

6-09 213 2376 69 2.9% 63 2.7%

Lifetime to date 1975 16445 524 3.2% 463 2.8%

6xGCH, 8xBOB, 5xRSGCH

'16 3xGCH, 3xRSGCH, 2xBUOB

OR State Fair RSGCH

'17 3xBOB, 3xBUOB, OR State Fair BOB, BUOB

Member- Supreme Breeder's Trio

'18 OR State Fair BOB, BUOB Member- Supreme Breeder's Trio

## **GCH TEMPO AQUILA SHEN 5\*M (retired)**



Shen

2-0 FS88 VVVV, 3-0 FS90 EEEE,

4-0 FS91 EEEE, 5-2 FS90 VEVE, 8-0 FS91 EEEE

1-07 305 2445 80 3.3% 71 2.9%,

2-08 305 3614 115 3.2% 102 2.8% ext 318 3719 118 105

3-07 305 3549 123 3.5% 98 2.8% ext 320 3667 128 101

4-08 287 3283 107 3.2% 93 2.8%

5-07 305 3123 108 3.5% 88 2.5% ext 370 3403 120 97

7-04 305 3296 116 3.5% 90 2.7% ext 360 3611 129 100

Lifetime to date 1993 20356 690 3.4% 575 2.8%

'14- Jr CH District VII Alpine Specialty,

RSJCH WA State Fair,

'15- 3x2nd to Jing, OR State Fair 1st 2 yr old

'16 WA State Fair 2nd place 3 yr old

'17 2xGCH, 1xRSGCH

The 'Tetra twins' are inseparable. They are simply one soul in two bodies. Slow maturing like Tetra, they are finally fully mature. Jing has a rounder rear udder and nicer medial and teat delineation, while Shen is stronger on her feet and legs, and has higher production. After having had quads four years in a row, we are giving Jing a year off in 2021. Shen freshened in November 2020. Jing is bred for November kids, while Shen came up open this time.

ss- \*B Redwood Hills Sierra Jazzman

s-+\*B Redwood Hills Jazz RimRock

5 GCH daughters, all FS90-92 with 3,000-4,300 lbs milk

sd-SGCH Redwood Hills X-Rated Rima 11\*M

2-11 FS92 EEEE, 3-11 FS93 EEEE

1-05 305 3760 131 3.5% 105 2.8% ext 403 4600 168 130

2-07 301 4020 134 3.3% 110 2.7%

'09 National Show Jr Champion

'10 National Show 1st Yearling milker

'12 National Show Sr Champion, Best Udder, Total Performe

ds-SGCH++\*B Milar Farm Royal Image

2000 Spotlight Sale Buck

LA 6-2 FS90 EEE, 4 daughters FS92-93 EEEE

1st Sr Get of Sire- 2007 & 2008 Nat'l Show

d-SGCH Tempo Aquila Tetrizzini 4\*M

7-4 FS94 EEEE 2013 National Champion & Best Udder

3-2 FS 92 EEEE, 4-5 FS93 EEEE, 5-5 FS92 EEEE, 6-5 FS93 EEEE

2-10 305 3496 125 3.6% 98 2.8%

dd-SGCH Tempo White Macaroon 3\*M

6-3 FS93 EEEE 1-11 305 3041 106 3.5% 87 2.9%

## **GCH TEMPO AQUILA DILETTANTE 6\*M**

born 3/14 American sundgau ID455 & 454



Dilettante 4 yrs

2-3 FS89 EEVE, **3-3 FS90 VEVE,**  
**4-4 FS93 EEEE**

1-10 305 2804 87 3.1% 78 2.8% ext 324 2914 91 81

2-11 305 4059 131 3.2% 105 2.6%

ext 331 4277 139 112

3-11 292 2933 96 3.2% 82 2.7%

5-0 237 3317 112 3.4% 82 2.5% proj 3954 135 100

Lifetime to date 1184 13441 438 3.3% 357 2.7%

'16 3xGCH, 1xBUOB

'17 3xBOB, 2xBUOB

'18 2xBOB, 1xBIS

'18 **ADGA Nat'l High Milk & Fat Awards**, 7<sup>th</sup> pl 4 yr old

'18 1st/1st udder Washington State Fair

With both Rima and Tetra for granddams, Dil and Euphoria are very exciting pair of sundgau sisters. Like the Tetra twins, they have a lot to live up to, and are doing a good job of it. They have the dairy style of Rotini, with nice heads, level topline and a lot of class. Both have extremely correct udders, and Dil quickly finished her GCH in her first two shows. Dil is a bit more dairy, Euphoria has slightly stronger bone, but otherwise it is difficult to tell them apart. After taking a year off, Dil has been rehomed to a smaller herd. In the meantime, Euphoria looks her best ever.

ss- \*B Redwood Hills Sierra Jazzman

s-+\*B Redwood Hills Jazz RimRock

5 GCH daughters, all FS90-92 with 3,000-4,300 lbs milk

sd-SGCH Redwood Hills X-Rated Rima 11\*M

**3-11 FS93 EEEE**

2-07 301 4020 134 3.3% 110 2.7%

'12 **National Show Sr Champion, Best Udder, Total Performe**

ds- SG+\*B Redwood Hills Jaeger **Elite Sire**

8 GCH daughters, multiple EX and 4,000 lb daughters

Son of 2005 & 2007 Nat'l CH- SGCH RWH RememberJambalya

d- SGCH Tempo Aquila Rotini 5\*M

**8-4 FS93 EEEE**

**5-00 305 4076 126 3.1% 105 2.6%**

**2012 ADGA National Show 1<sup>st</sup> place 5-6 yr old**

'12 **WA State Fair BOB (over Living!)**

dd-SGCH Tempo Aquila Tetrzzini 4\*M

**7-4 FS94 EEEE** 2-10 305 3496 125 3.6% 98 2.8%

**2013 National Champion & Best Udder**





## **2014 Oregon State Fair & District IIV Alpine Specialty Championship**

Right to left-

1<sup>st</sup> aged doe (sundgau)- SGCH Tempo Aquila Rotini 5\*M

1<sup>st</sup> 5-6 yr old (chamoisee)- SGCH Tempo Aquila Living Free \*M  
GCH, BOB, BUOB, BIS

1<sup>st</sup> 4 yr old (sundgau)- SGCH Tempo Aquila Absinthe 6\*M

2<sup>nd</sup> 4 yr old (chamoisee)- SGCH Tempo Aquila Rosa Marina 6\*M

1<sup>st</sup> 3 yr old (broken chamoisee)- GCH Tempo Tocai 6\*M RSGCH

2<sup>nd</sup> 3 yr old (chamoisee)- Tempo Aquila Plainly Free 2\*M

1<sup>st</sup> 2 yr old (cut off)- Tempo Aquila Skippin' Free 2\*M



## 2013 ADGA National Show Group classes-



1<sup>st</sup> Place Breeder's Trio- L-R Tetra, Living, Rosa



1<sup>st</sup> Place Dairy Herd L-R Tetra, Living, Rosa, Rotini





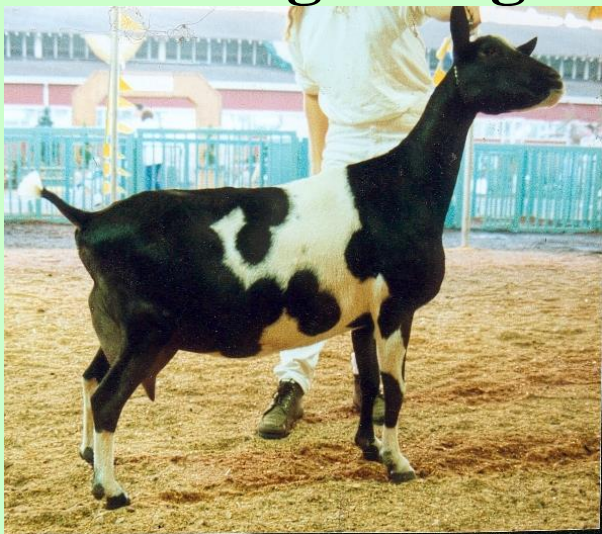
1<sup>st</sup> place Dam & Daughter- Tetra (R) Rotini (L)



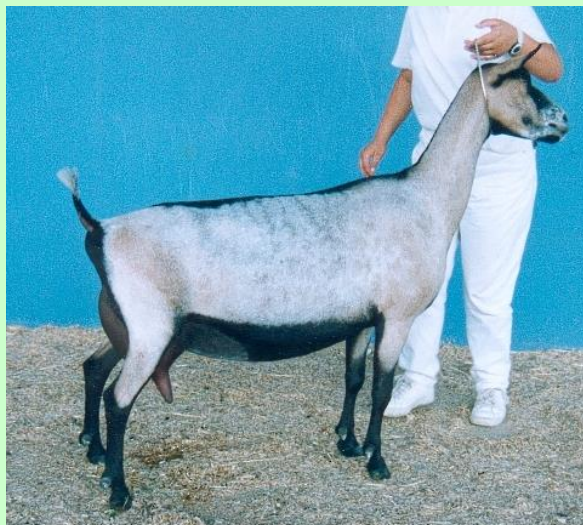
1<sup>st</sup> place Produce of Dam- Tokay daughters, Absinthe (L) Tocai (R)



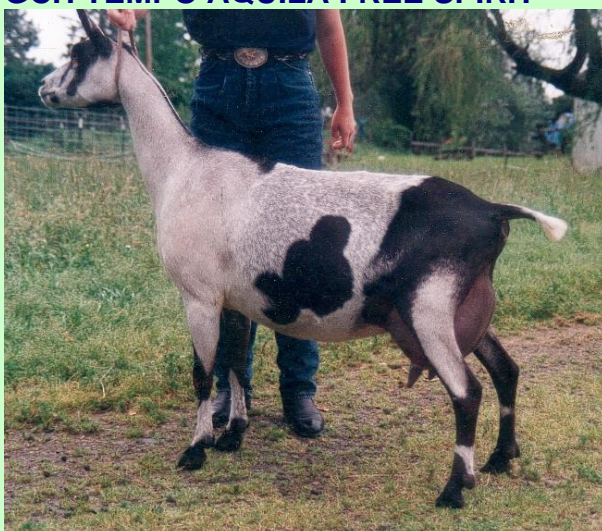
# In the beginning...



**GCH TEMPO AQUILA FREE SPIRIT**



**GCH DES RUHIGESTELLE FREE THINKER**



**GCH TEMPO AQUILA FREE LOVE**



**GCH DES RUHIGESTELLE FREE AIRE**



**GCH TEMPO AQUILA FREE RADICAL**



**GCH DES RUHIGESTELLE LUCY BROWN**





**GCH TEMPO AQUILA FREE BREEDING**



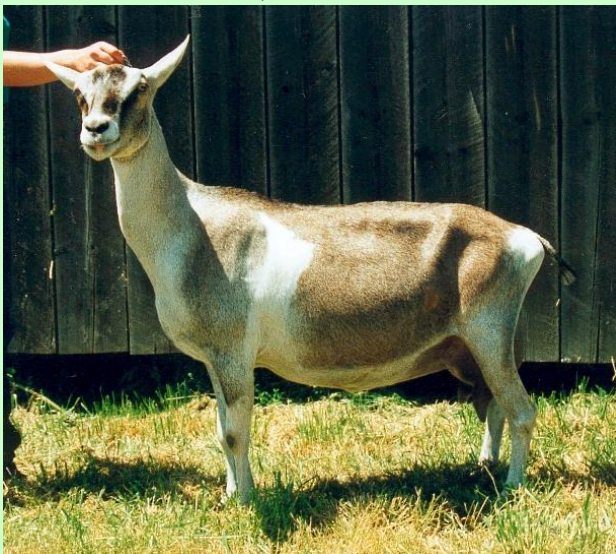
**GCH TEMPO AQUILA LOIS**



**GCH TEMPO AQUILA CAFFIENE FREE**



**GCH TEMPO AQUILA PRALINE**



**GCH GREEN VALLEY JEX ISIS**



**GCH TEMPO WHITE MACAROON (back),  
GCH TEMPO AQUILA PRALINE (front)**



## **LAMANCHA DOES-**

### **SGCH TEMPO JANICA 5\*M Elite doe**

born 3/07 Purebred chamoisee ID 752 TPS 94



Janica 3 yrs

LA 1-5 FS85 +V+V 3-5 **FS90 VEVE**  
 4-4 **FS91 EEEV** 5-5 **FS92 EEEE**  
 1-00 254 2223 75 3.4% 70 3.1%  
 1-11 302 2946 104 3.6% 94 3.3%  
**2-10 305 3568 120 3.4% 113 3.2% '10 Top Ten**  
 4-00 257 2968 106 3.6% 94 3.2%  
 5-01 207 2318 81 3.3% 74 3.0%  
 Lifetime to date 1366 14313 492 3.4% 451 3.2%  
 '10 3xGCH & BOB

Janica has a tremendous frame, and is our tallest LaMancha, with a wide rump and great feet and legs. Her open rib and sharp withers are more like an Alpine than most LaManchas. She was a very immature doe until she was four, now her frame and dairyness set her in a class apart from most LaManchas. Although she could have somewhat smaller teats and a longer foreudder, she has a high wide and smooth rear udder and lots of overall attachment. She is our highest production LaMancha (though Evianna is close), with one Top Ten record, and almost 3,000 lbs after a single doe kid in a short lactation.



Janica 5 yrs

ss-SG+B Winterwoods Musician  
s-SG+B Kickapoo Valley Travis \*Elite buck

at least 5 GCH daughters

sd-SGCH Kickapoo Valley Respect Sequel  
**2006 National Champion, FS92 EEEE**

ds-SGCH+\*B Tempo Yagudin

At least 2 GCH daughters

d-SGCH Tempo Picabo 4\*M

LA 2-00 FS89 VVVE 3-00 FS87 VVVV

1-08 305 3041 107 3.5% 89 2.9%

'05 7x1st 2xGCH, 1xBOB, 2xRSGCH,

'05 District 7 LaMancha Specialty 1<sup>st</sup> /1<sup>st</sup> udder 2 yr old

'05 4<sup>th</sup> place 2 yr old ADGA National

dd-SGCH Tempo Vonetta 3\*M

3-4 **FS90 EVVE**

3-00 303 3682 114 3.1% 103 2.8% **'05 Top Ten**

3-11 305 3667 114 3.1% 100 2.7% **'06 Top Ten**



## SGCH TEMPO TORAH BRIGHT 6\*M

born 1/10 Purebred black ID 003

3-6 FS88 V+EE (stale)

4-6 **FS90 VVEE** (stale)

**5-6 FS91 EEEE** (stale)

6-6 **FS90 EEEE** (stale)

1-04 389 2776 113 4.1% 97 3.5%

2-08 305 2949 114 3.8% 97 3.3%

ext 345 3171 120 3.8% 104 3.3%

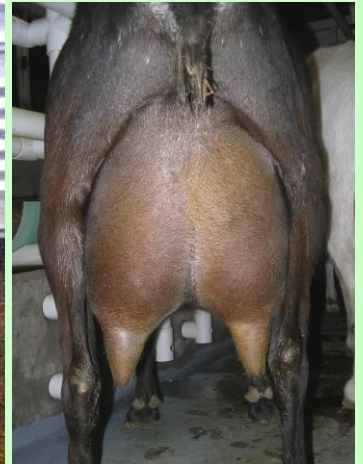
3-09 302 2410 82 3.4% 81 3.4%

5-10 105 1398 50 3.6% 45 3.2% inc

proj 3273 113 106

'15 2xGCH, 1xRSGCH, 1xBIS

'16 1xRSGCH



Torah is a Hannah daughter, and has her dam's level topline and general presence. She is wider, deeper, longer and more level, and attracts the most attention from farm visitors of any of our LaManchas. Like Hannah she has an extremely correct udder, only with more milk than her dam. Torah freshens off season, good for us, but not so good for her show record or appraisal scores. We don't usually do farm photos, but since Torah freshens in Nov, very few people get to see her fresh. We think she's pretty special.

Okay, even though she was stale, we decided to see what she could do in a showing last year. Well, apparently she can do just fine, with 2 GCHs and 1 BIS in her first two rings! She then finished this year, with another BIS!

After finishing her SGCH this year, Torah was sold to her 'forever' retirement home while still young enough to transfer well. We have retained two daughters.

### ss-+B Kastdemurs Sting

son of 2005 National Champion

SGCH Kastdemurs Slice \*M

5-5 FS93 EEEE

### s- SG+\*B Kastdemurs Tach Lach *\*Elite sire\**

many SGCH and FS90-93 daughters

### sd-SGCH Kastdemurs Evian 3\*M

**2009 NATIONAL CHAMPION & BEST UDDER**

**2008 NATIONAL CHAMPION & RES BEST UDDER**

**2006 Reserve National Champion**

**3-5 FS92 EEEE, 4-3 FS94 EEEE, 5-3 FS94 EEEE**

**2-11 305 3860 120 3.1% 102 2.6% '07 Top Ten**

### ds-GCH +B Becca's Tuscon

**FS92 EEEE, 5 daughters LA FS90-91**

### d-SGCH Tempo Hannah 5\*M

**7-2 FS91 EEEE** 3xGCH, 2xRSGCH, 5xBOB, 1xBIS

4-08 305 2636 107 4.1% 82 3.1%

Lifetime to date 1381 12239 494 4.1% 379 3.1%

### dd-SG Tempo Mia 4\*M

**2-2 FS90 VEEE**

1-01 281 2116 82 3.9% 67 3.2%

## SGCH TEMPO HANNAH 5\*M (deceased, reference only)

born 4/06 Purebred black and tan with white ID 684 TPS 88



Hannah age 3 yrs



Hannah age 7 yrs

LA 2-4 FS89 EVEV (first freshener)

3-4 **FS90 EEEV**

5-2 **FS91 EEEV**

**7-2 FS91 EEEE**

3xGCH, 2xRSGCH, 5xBOB, 1XBIS

'13 Oregon State Fair- Total Performer and High Lifetime Lactation Awards, 1<sup>st</sup> aged doe

2x3rd place at ADGA National Show, '09- 3 yr old, '13- aged doe

1-10 272 1847 82 4.4% 57 3.1%

2-10 297 2538 108 4.3% 80 3.2%

4-08 305 2636 107 4.1% 82 3.1%

6-10 234 1912 71 3.7% 59 3.1%

Lifetime to date 1706 15057 584 3.9% 456 3.0%

Now retired, Hannah is as correct and stylish as ever. Full or empty, at home or the showing, Hannah is one of the most beautiful does I have owned. She simply floats as she walks, and is so correct that she is always beautifully set up. Although her udder isn't as capacious as some of our other does, it is very tightly attached, with extremely correct teats and medial. Hannah has high components, wonderful flavor and ease of milking. Hannah now has at least two FS91 daughters. At seven years old, we decided to take Hannah out for the first time in three years. Yeah, she's still had her mojo, with 2xBOB at REDGA, followed by BOB at NWODGA, then 3<sup>rd</sup> at Nationals! At 11 years old Hannah gave us triplet does, so we felt it was time for her to retire.

### ss-GCH+\*B Becca's Hemingway

sire of **2005 National Champion**

SGCH Kastdemur's Slice 3\*M

**5-05 FS93 EEEE**

4-11 3080 105 3.4% 92 3.0%

### s-GCH +B Becca's Tuscon

**FS92 EEEE, 5 daughters LA FS90-91**

### sd-SGCH One Oak Hill Medicine Tuzla

**2002 NATIONAL CHAMPION**

Full sister to-

GCH++\*B One Oak Hill Medicine Tumult

### ds-SGCH++\*B Quixote Kate's Kareem

multiple GCH and Top Ten daughters

including-SGCH Tempo Torvill 7\*M 3-4 FS91 EEEE

3-00 286 3407 114 3.3% 98 2.9% '04 TOP TEN

SGCH Tempo Vonetta 3\*M 3-4 FS90 EVVE

3-00 303 3682 114 3.1% 103 2.8% '05 Top Ten

3-11 305 3667 114 3.1% 100 2.7% '06 Top Ten

### d-SG Tempo Mia 4\*M

2-2 **FS90 VEEE**, 1-01 281 2116 82 3.9% 67 3.2%

### d-SGCH Tempo Nadia 3\*M

**5-2 FS91 EEEE** 4xGCH, 10xBOB

**3x2nd place (2, 3 & 5 yrs old) at Nationals**

4-10 305 2636 110 4.2% 75 2.8%

Lifetime to date 1470 11582 485 4.2% 333 2.9%



# SGCH TEMPO EVIANNA 9\*M *Elite doe* (deceased, reference only)

born 1/08 Purebred white ID 812



Evianna- yearling



Evianna- 7 yr old

**2009 RESERVE NATIONAL CHAMPION (as a yearling!)**

**2012 RESERVE NATIONAL CHAMPION, BEST UDDER, LAMANCHA TOTAL PERFORMER**

**2013 NATIONAL CHAMPION, BEST UDDER, LAMANCHA TOTAL PERFORMER, HIGH LIFETIME MILK & FAT**

**2015 RESERVE NATIONAL CHAMPION, LAMANCHA TOTAL PERFORMER, HIGH LIFETIME MILK & FAT**

1-7 FS89 VEEE, 2-7 FS91 EEEE, 3-6 FS92 EEEE

4-7 FS93 EEEE, 5-6 FS92 EEEE, 7-6 FS93 EEEE

1-01 305 2420 96 4.0% 80 3.3%

2-00 304 2837 106 3.7% 92 3.2%

3-00 288 3122 120 3.8% 100 3.2%

3-11 305 3475 130 3.7% 109 3.1% '12 Top Ten

5-01 203 2421 78 3.2% 77 3.2%

7-00 294 3234 116 3.6% 100 3.1%

lifetime to date 2022 20767 751 3.6% 661 3.2%

**'15 District VII LaMancha Specialty BOB, BUOB, BIS, BUIS, and the same in second ring!**

'09 10x1st, 2xGCH, 3XRSGCH

**GCH- 2009 District VII LaMancha Specialty**

'10 1xBOB & BUOB

**RSGCH- 2010 District VII LaMancha Specialty**

'11 3xBOB, 3xBUOB, 2xBUIS

'12 1xGCH, 5xBOB & BUOB, 2xBIS, 3xBUIS

'12 Washington State Fair GCH, BOB, BUOB, BUIS

**'13 2xBOB, District VIII LaMancha Specialty BOB & BUOB**

Yes, a hot yearling can grow up into a beautiful, productive doe. Obviously, Evianna's a pretty special doe, but what I like the most is how complete she is. She is strong in general appearance, and has an extremely correct udder with a beautiful rear udder. She is a big girl, but has lots of femininity and dairyness. Most important to me is that for all her early awards, she was never overmature, always looking like a young doe with room to grow. As a 4 year old, she freshened with a big healthy set of triplets, had a high test over 16 lbs, and was finally fully mature, with all the depth, angularity and dairyness we were waiting for. Now 9 years old, she is still just as correct and beautiful as she was as a yearling. She has been a solid doe in the milk parlor too, with a 10 lb a day lifetime average, and a Top Ten record to go with her National Champion! We feel Evianna has nothing left to prove, and have retired her.

ss-+B Kastdemurs Sting

son of 2005 National Champion

SGCH Kastdemurs Slice \*M 5-5 FS93 EEEE

s- SG+\*B Kastdemurs Tach Lach *\*Elite sire\**

many SGCH and FS90-93 daughters

sd-SGCH Kastdemurs Evian 3\*M

**2009 NATIONAL CHAMPION & BEST UDDER**

**2008 NATIONAL CHAMPION & RES BEST UDDER**

**2006 Reserve National Champion**

3-5 FS92 EEEE, 4-3 FS94 EEEE, 5-3 FS94 EEEE

2-11 305 3860 120 3.1% 102 2.6% '07 Top Ten

ds-SG++\*B Tempo Jesse O

7-2 FS91 EEEE, 8-2 FS92 EEE

Twin to SGCH Tempo Nadia 3\*M

d- SGCH Tempo Kristi 8\*M *\*Elite doe\**

LA 3-5 FS88 VVVV

2-10 305 3235 118 3.6% 112 3.5%

3xGCH, 3xRSGCH, 1xBOB, 3xBUOB, 1xBUIS

dd-SGCH Tempo Torvill 7\*M

3-4 FS91 EEEE

3-00 286 3407 114 3.3% 98 2.9% '04 TOP TEN

3 GCH daughters

**SGCH TEMPO SILHE 7\*M \*Elite\*** (deceased, reference only)

born 12/15 ID500 black



1-6 FS85 +V+V, **2-7 FS91 EEEE**

**3-7 FS91 EEEE**

1-03 305 2770 97 3.5% 86 3.1%

ext 654 5374 199 170

3-01 305 3156 115 3.6% 103 3.3%

ext 308 3181 116 104

4-02 283 2987 102 3.4% 94 3.1%

Lifetime 1306 12017 435 3.6% 384 3.2%

'17- 1x1st, 2x2nd (to Alex), 3x1st udder

'18 3xGCH, 3xRSGCH, 1xBUIS, 8x1st, 1x2nd,

'19 1xBOB/BUOB,

**2<sup>nd</sup> place 3 yr old ADGA Nationals**

Silhe was a hard working yearling milking between 10-12 lbs, so we opted to milk her through. Despite being a first freshener on extended lactation, Silhe did quite well at our competitive NW shows, finishing her GCH with a BUIS win! Fresh as a 3 yr old, she looked better yet, placing 2<sup>nd</sup> in a huge class at Nationals. Now fully mature, she is a delightful combination of Presto's frame, Tach's production, and Hannah's elegance. While I often struggle with LaMancha quirkiness in a dairy herd, Silhe is our mainstay with her calm demeanor and consistent production.

12/14/2020 We lost Silhe to a sudden toxicity, just two days after confirming a pregnancy with triplets. Since she was really the reason we still have LaManchas, this loss is devastating to us. My plans right now are to freshen all the remaining does, including kids, and decide in June what I will do with them.

sss- SG++B Kickapoo-Valley Travis \*Elite\*

ss-SGCH ++\*B Tempo Very Dark

ssd-SGCH Tempo Sidney W

6-1 FS92 EEEE

2-09\* 305 2990 3.9 117 3.2 95 100 Top Ten

s-SG+\*B Lone Thistle Presto \*Elite\*

10 GCH progeny

sds-SG++\*B Kastemurs Tach Lach \*Elite\*

sd- SGCH Barnowl Abracadabra 2\*M

5-2 FS91 EEEE

4-11 263 2570 4.7 122 3.3 86

sdd- SGCH Barnowl Bewitched \*Elite\*

8-3 FS92 EEEE

8 GCH daughters

ds-SG++\*B Kastemurs Tach Lach \*Elite\*

25 GCH progeny!

d-SGCH Tempo Torah Bright 6\*M \*Elite\*

5-5 FS91 EEEE

2-08 305 2950 3.8 113 3.3 96

dd-SGCH Tempo Hannah 5\*M

5-1 FS91 EEEE

4-08 305 2640 4.1 107 3.1 82 102



## SGCH TEMPO SOCHI 6\*M (sold, reference only)

born 4/16 cream



Sochi, 3 yrs



dam- Evianna, 7 yrs

**2-3 FS89 EEEE, 3-4 FS90 EEEE**

1-10 305 3035 98 3.2% 90 3.0%  
ext 639 5974 195 3.3% 191 3.2%

'18 2x2nd, 1xRSGCH '19 2xGCH, 3xRSGCH,  
'19 5<sup>th</sup> place 3yr old ADGA Nationals (fresh 16 mos)  
RSGCH D7 LaMancha Specialty (Boise)

Sochi is a wide and strong doe with a wide, level rump. She freshened with an udder much like Evianna and came in milking very well. Her appraisal score as a first freshener was as high as allowed, showing the promise of this neat young doe. Shown twice in '18, she was 2x2nd, 1xRSGCH in an extremely competitive show. After a suspected case of metritis that fall, we followed with a milk through lactation into 2019. Although quite 'chubby' by then, she still looked good enough to win 2xGCH, 3xRSGCH in strong competition to earn her GCH in just two shows, including RSGCH at the D7 LaMancha Specialty. And, despite being stale, her high wide rear udder, correctness and balance carried her to 5<sup>th</sup> in a large and competitive class at Nationals! Sadly, we still can't get her bred, so we tried IVF embryo transfer. The results were excellent with several embryos!

**2021 update-** Despite treatment, Sochi continued to be open this year. After much consideration, I decided to sell her rather than wait to do another round of IVF with her. As our future in LaManchas is somewhat shaky right now, it made more sense for her to go where she can be more productive than here.

sss- SG++B Kickapoo-Valley Travis \*Elite\*

ss-SGCH ++\*B Tempo Very Dark

ssd-SGCH Tempo Sidney W

6-1 FS92 EEEE 2-09\* 305 2990 3.9 117 3.2 95 100 Top Ten

s-SG+\*B Lone Thistle Presto \*Elite\*

10 GCH progeny

sds-SG++\*B Kastemurs Tach Lach \*Elite\*

sd- SGCH Barnowl Abracadabra 2\*M

5-2 FS91 EEEE 4-11 263 2570 4.7 122 3.3 86

sdd- SGCH Barnowl Bewitched \*Elite\*

8-3 FS92 EEEE

8 GCH daughters

ds-SG++\*B Kastemurs Tach Lach \*Elite\*

25 GCH progeny!

d-SGCH Tempo Evianna 5\*M \*Elite\*

**7-6 FS93 EEEE 3-11 305 3475 130 3.7% 109 3.1% '12 Top Ten**

**2009 RESERVE NATIONAL CHAMPION (as a yearling!)**

**2012 RESERVE NATIONAL CHAMPION, BEST UDDER,  
LAMANCHA TOTAL PERFORMER**

**2013 NATIONAL CHAMPION, BEST UDDER,  
LAMANCHA TOTAL PERFORMER, HIGH LIFETIME MILK & FAT  
2015 RESERVE NATIONAL CHAMPION,**

**LAMANCHA TOTAL PERFORMER, HIGH LIFETIME MILK & FAT**

dd- SGCH Tempo Kristi 8\*M \*Elite doe\*

LA 3-5 FS88 VVVV 2-10 305 3235 118 3.6% 112 3.5%

3xGCH, 3xRSGCH, 1xBOB, 3xBUOB, 1xBUIS

# In the beginning...



**SINGING HILLS SADIE HAWKINS**



**GCH WINDSTAR NOTTA SHY ANNE**



**GCH TEMPO AUDREY E**



**GCH TEMPO NADIA**



**GCH TEMPO KATYA**